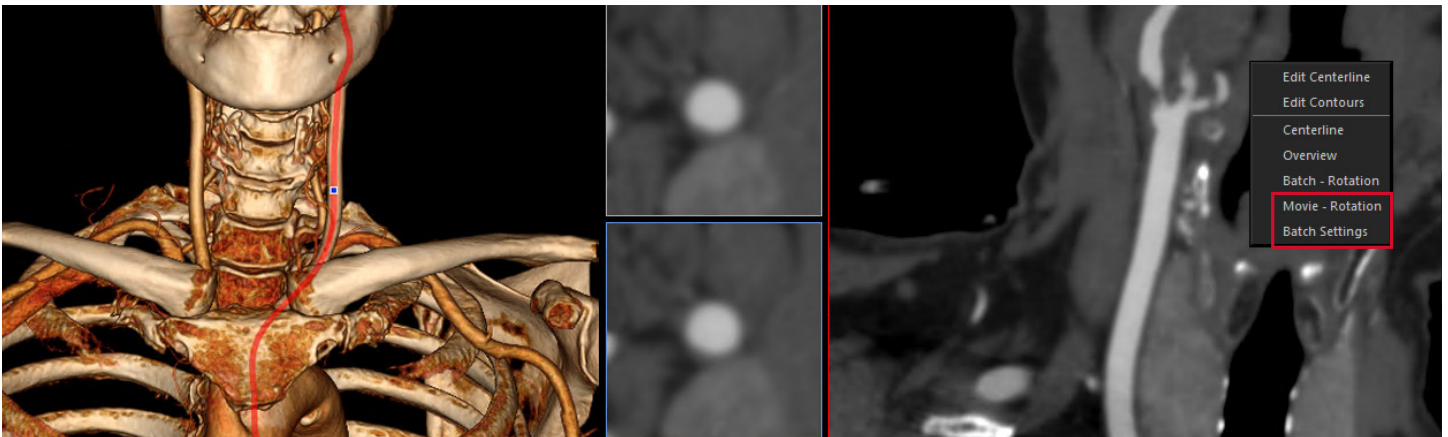


What's New in Vitrea® Advanced Visualization Version 7.11



This document is specific to what's new in version 7.11. For information on applications and features added prior to version 7.11, refer to the [What's New in Vitrea Advanced Visualization Version 7](#) document.

New Features and Enhancements

In addition to our current Vitrea Advanced Visualization applications, we continue to improve and enrich our clinical offerings across all modalities. Current enhancements include:

Batch Rotation and Batch Movie Rotation of the Single Curved Vessel Inset View

Batch rotation and batch movie are now available from the curved inset view. Users can create a batch rotation or a batch movie from the single curved vessel display in the inset view. Overlays that can be displayed on the batch rotation include the following:

- centerline
- ruler (if created), and
- plaque characterization.

This feature allows users to capture a curved batch rotation from the right-click menu, minimizing the mouse clicks to create a batch from the displayed single CPR view.

Search by Institution

Users can filter their study list search by institution name on the Vitrea study list. This search by institution option will help in multi-clinic scenarios when physicians want to filter the patients they are viewing.

Export Options

Snapshots can now be grouped into a single series during export. The series description can be modified during export.

High Resolution Support for Global Illumination

Global Illumination Rendering (GIR) is now available for high resolution data (1024x1024 and 2048x2048). The maximum size of the volume that can be viewed using GIR is dependent upon the video card. Please consult the user guide or call Vital Support for detailed information.

Support for Aquilion Prime Helical Multi-Frame Enhanced CT Brain Perfusion Data

Grid Card Support

Vitreia Advanced Visualization now supports NVIDIA GRID cards of Pascal series or newer on a “Q” vGPU profile with at least 4GB GPU memory.

Multi Modality Viewer

The following enhancements are now available with the editing tools and 3D workflow:

- The Bone Pick tool allows users to select a seed point in the Base object.
- The Undo option allows users to undo the last manual segmentation change.
- The Vessel Recover tool (formerly the 2-click tool) allows users to move voxels from the Bone object to the Base object.
- The Visible Pick tool allows users to manually correct segmentation.
- A new CTA layout on the 3D/MPR tab.
- 3D editing tools on the MPR views.
- Ability to select pre-defined presets to alter the visualization of the 3D view from the Multi object side panel in 3D view.
- mAs value has been added to the dose demographics for CT images.
- Users can select window/level (W/L) keyboard shortcuts available in the 3D/MPR screen.
- Additional keyboard shortcuts are now available to allow users to cycle through W/L presets in the 2D and MPR views and select 3D orientation markers.
- Volumes in the left-hand carousel are now decorated with a 3D tab if stacks contain one isotropic volume.
- Ability to capture individual views and make batching of parallel MPRs on the MPR/3D layout.

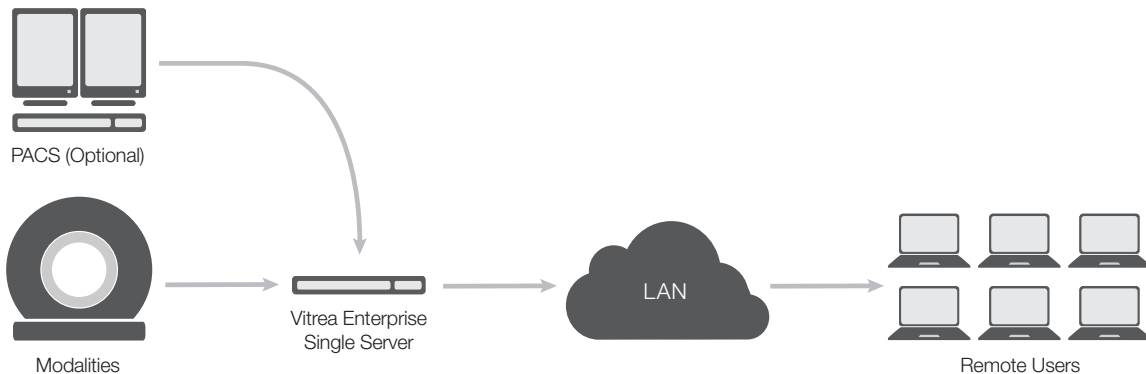
Olea Sphere™

- Olea Sphere version 3.0 SP17 is integrated into Vitrea Advanced Visualization version 7.11.
- Performance of data transfer between the Olea MR applications and the storage system has been improved.

Deployment Options

Vitreia Enterprise Single Server

Vitreia Enterprise Single Server is a new configuration for the Vitrea Advanced Visualization enterprise deployment. Vitrea enterprise single server is a server-based solution for up to six concurrent users. It is available as a workgroup or domain deployment with PACS integration support for domain environments only.



Partner Integration Applications

All partner applications are available from all deployments (workstation, extend, enterprise single server and enterprise). Vital integrates the latest versions from its partners.

Features	Version
4DM by INVIA	2017.0.2.321
Cedars Cardiac Suite	2017.2
iCAD VeraLook® CT Colon CAD	1.0.10/1.1.5
Medis® Suite Cardiovascular MR	Medis® Suite 3.1.1616 QFlow® 8.1.48.08 QMass® 8.1.48.08
Mirada Nuclear Medicine	4.4.2
Mirada Oncology Fusion	3.6
Mirada RTx	1.8
TOMTEC	2.30.04
Visia™ CT Lung CAD by MeVis Medical Solutions	5.7

Partner Integration Enhancements

The following enhancements are now included within our partner integrated versions in Vitrea Advanced Visualization:

Cedars Cardiac Suite

QGS+QPS

- Tracer kinetics for SPECT and PET – CFR/MBF
- Automated MIP raw projections for PET
- SUV polar maps
- Annotation Tools
- Custom measurement tools – ruler, probe, circle, polygon, profile
- Configurable dataset layouts

QBS

- Planar MUGA processing

Partner Integration Enhancements

The following enhancements are now included within our partner integrated versions in Vitrea Advanced Visualization:

Medis Suite Cardiovascular MR

QMass

- The default TSI Calibration method has changed from 'Divide by baseline value' to 'None'.

QFlow

- QFlow now supports the reading and recognition of Multi-frame Siemens MAGNETOM Vida flow images.

Mirada

Multi Monitor Support for Mirada Workflows

Mirada can now leverage multiple monitors for clinical workflows. This functionality is exclusive to the Mirada application.

Mirada Nuclear Medicine

- Advanced renal quantification with AUC (area under the curve) and Patlak-Rutland methods for split function.
- Configurable and flexible gastric statistics - set your own custom times for the ejection fraction.
- Good support of different cameras through site configurable profile files.
- Easy QC of all acquired data through 'Load all' workflow.

4DM is manufactured by INVIA. Cedars-Sinai Medical Center Cardiac Suite is manufactured by Cedars-Sinai Medical Center. Cerebral Aneurysm Analysis and Dental Analysis are manufactured by Canon Medical Systems Corporation. iCAD VeraLook CT Colon CAD is manufactured by iCAD. Medis Suite Cardiovascular MR is manufactured by Medis Medical imaging Systems BV. Mirada Nuclear Medicine, Mirada Oncology Fusion and Mirada RTX are manufactured by Mirada Medical. Visia CT Lung CAD is manufactured by MeVis Medical Solutions. May not be available in all countries. TOMTEC applications are owned and manufactured by TOMTEC Imaging Systems GmbH. TOMTEC-ARENA, 4D CARDIO-VIEW and 4D SONO-SCAN are trademarks of TOMTEC Imaging Systems GmbH. Images: © 2018 TOMTEC Imaging Systems GmbH.

Vital and Vitrea are registered in the U.S. and may have protection in other countries. Marks not owned by Vital Images, Inc. are the property of their respective holders.

Vital, a Canon Group company, has a legacy of leadership in healthcare imaging using smart algorithms and techniques of innovation. Through modular and scalable enterprise message orchestration, enterprise visualization and enterprise analytics solutions, Vital's Vitrea® Enterprise Imaging solution makes data accessible across the entire enterprise in any standardized form. Our solutions give clinicians the ability to make real-time precise decision-making for today's empowered healthcare consumer while delivering an exceptional patient care experience.