

# Vitreia Read Technical File

## Vitreia Read 9.0 - Diagnostic - Enterprise DICOM Conformance Statement

### Vitreia Read 9.0.0

Version: 2.5

Date: 27 Nov 2023

Document Id: 2022.03.036

Canon Medical Informatics A/S

Krumtappen 4, Etage 3

DK-2500 Valby

Denmark

Canon Medical shall not be liable for errors contained herein or for incidental or consequential damages in connection with the furnishing, performance or use of this publication. Canon Medical reserves the right to revise this publication and to make changes to its content at any time, without obligation to notify any person or entity of such revisions and changes. This publication may only be used in connection with the promotion, sales, installation and use of Canon Medical products.

<https://www.mi.medical.canon/>

The Canon logo is displayed in a bold, red, sans-serif font.

Vitreia Read 9.0.0

## Table of Contents

<b>1 Document History .....</b>	<b>3</b>
<b>2 Conformance Statement Overview.....</b>	<b>5</b>
<b>3 Introduction .....</b>	<b>6</b>
3.1 Audience.....	6
3.2 Remarks.....	6
3.3 Terms and Abbreviations.....	6
3.4 References.....	7
<b>4 Networking.....</b>	<b>8</b>
4.1 Implementation Model .....	8
4.2 AE Specifications.....	10
4.3 Network Interfaces.....	45
4.4 Configuration .....	46
<b>5 Media Interchange .....</b>	<b>48</b>
5.1 Implementation Model .....	48
5.2 AE Specifications.....	49
5.3 Augmented and Private Application Profiles.....	65
5.4 Media Configuration .....	65
<b>6 Support of Character Sets .....</b>	<b>66</b>
6.1 Overview.....	66
6.2 Character Sets.....	66
6.3 Character Set Configuration.....	66
<b>7 Security.....</b>	<b>67</b>
7.1 Security Profiles .....	67
7.2 Association Level Security .....	67
7.3 Application Level Security .....	67
<b>8 Annexes .....</b>	<b>68</b>
8.1 IOD Contents .....	68
8.2 Data Dictionary of Private Attributes .....	78
8.3 Coded Terminology and Templates.....	78
8.4 Grayscale Image Consistency.....	78

8.5 Standard Extended/Specialized/Private SOP Classes ..... 78

8.6 Private Transfer Syntaxes ..... 78

# 1 Document History

Revision	Date	Author	Changes
0.1	2010-07-15	NHK	Initial draft for EasyViz 3.0.4 Added support for: Multi-frame Grayscale Byte Secondary Image Storage Multi-frame Grayscale Word Secondary Capture Image Storage Multi-Frame True Color Secondary Capture Image Storage
0.2	2011-01-28	TS	Updated for 3.2 Added VL Image Storage (retired) for Storage SCP. Added JPEG 2000 Lossless Only and JPEG 2000 Lossless and Lossy transfer syntaxes to Storage SCP accepted transfer syntaxes. Updated Implementation Version Name and Implementation Class UID.
0.3	2011-04-19	JBB	Updated for 3.2. Added Description of GPWL support
0.4	2011-11-29	TS	Updated for 4.0. No actual changes except document ID, software version and references to other 4.0 documents.
0.5	2013-04-25	MWN	Updated for 5.0. No actual changes except document ID, software version and references to other 5.0 documents.
0.6	2013-05-07	MWN	Converted document into new template
0.7	2014-08-05	MWN	Updated for 6.0. No actual changes except software version and references to other 6.0 documents.
0.8	2015-09-14	MWN	Updated for 7.0. No actual changes except software version and references to other 7.0 documents.
0.9	2016-04-11	Martin Wallengren Nilsson	Changed Document Template
1.0	2017-03-7	Martin Wallengren Nilsson	Updated for 7.3. No actual changes except software version
1.1	2017-09-06	Alicia Newell	Changed Document Template, removed General Purpose Worklist, and updated implementation version name and class UID.
1.2	2017-09-11	Alicia Newell	Changed document font. Updated footer.
1.3	2018-02-21	Alicia Newell	Updated for 7.5. Added support for Digital X-Ray Image Storage – For Processing and Digital Mammography X-Ray Image Storage – For Processing.
1.4	2018-08-08	Alicia Newell	Added support for Fuji CR.

1.5	2018-11-27	Alicia Newell	Updated for 7.6. Changed DICOM Standard.
1.6	2019-06-24	Karen Piech	Updated for 7.7. Changed the company name to Vital Images. Removed the Network Services table from the Overview section because the content appears in greater detail later in the guide.
1.7	2020-03-06	Karen Piech	Updated for 8.0. Added support for Encapsulated PDF Storage. Removed Hardcopy Grayscale Image Storage and Hardcopy Color Image Storage. Added Display Storage and Read Media entries.
1.8	2020-10-05	Karen Piech	Updated for 8.1. Removed Digital Intra-oral X-Ray Image Storage – For Processing. Added Visible Light Image Storage (Retired). Added note about the limit of an individual DICOM object.
1.9	2021-03-15	Karen Piech	Updated version information for 8.2.
2.0	2021-03-16	Julian Hagemester	Updated the handling of softcopy presentation states that do not provide a Modality LUT Module (Section 8.1.2.1)
2.1	2021-03-25	Karen Piech	Added support for Grayscale Planar MPR Volumetric Presentation State Storage. Updated date and formatted first page.
2.2	2021-09-23	Karen Piech	Updated for 8.3. Added support for Spatial Fiducials Storage.
2.3	2022-03-08	John Ljøterud	Updated for 8.4 and changed Doc id from 2017.03.006 to 2022.03.036
2.4	2023-03-17	Jesper Bojesen	Added support for Encapsulated STL Storage
2.5	2023-11-27	Malene Kierulff Madsen	Updated version information for 9.0.

## 2 Conformance Statement Overview

The Vitrea Read Image Display implements the necessary DICOM services to query, retrieve and display CR, CT, DX, MG, MR, PT, RF, SC, US, and XA images. In addition, Vitrea Read Image Display may be used to: print DICOM instances to a network attached hardcopy device via the General 2D CAM, import DICOM instances from a CD-R/DVD via the Vitrea Read PACS Workflow Manager, or export DICOM instances to a CD-R/DVD via the Vitrea Read PACS Workflow Manager. Vitrea Read supports individual DICOM objects up to 2GiB in size.

## 3 Introduction

### 3.1 Audience

This document is intended for hospital staff, health system integrators, software designers or implementers. It is assumed that the reader has a working understanding of DICOM.

### 3.2 Remarks

DICOM, by itself, does not guarantee interoperability. However, the Conformance Statement facilitates a first-level validation for interoperability between different applications supporting the same DICOM functionality.

This Conformance Statement is not intended to replace validation with other DICOM equipment to ensure proper exchange of information intended.

The scope of this Conformance Statement is to facilitate communication with Vitrea Read and other vendors' equipment. The Conformance Statement should be read and understood in conjunction with the DICOM Standard [DICOM]. However, by itself it is not guaranteed to ensure the desired interoperability and a successful interconnectivity.

The user should be aware of the following important issues:

The comparison of different conformance statements is the first step towards assessing interconnectivity between Vitrea Read and other vendors' equipment.

Test procedures should be defined to validate the desired level of connectivity.

The DICOM Standard will evolve to meet the users' future requirements. Canon Medical reserves the right to make changes to its products or to discontinue its delivery.

### 3.3 Terms and Abbreviations

Definitions, terms and abbreviations used in this document are defined within the different parts of the DICOM standard. A list of abbreviations and terms can be seen in Table 3.

Term	Description
AE	DICOM Application Entity.
AET	Application Entity Title.
BSPS	Blending Softcopy Presentation State.
CAD	Computer Aided Diagnostics.
CD-R	CD Recordable.
CR	Computed Radiography.
CT	Computed Tomography.
DICOM	Digital Imaging and Communications in Medicine.
DX	Digital X-Ray.

Term	Description
FSC	File Set Creator.
FSU	File Set Updater.
FSR	File Set Reader.
GSDF	Grayscale Standard Display Function.
GSPS	Grayscale Presentation State.
MG	Mammography.
MR	Magnetic Resonance.
PT	Positron Emission Tomography.
RF	X-Ray Radiofluoroscopic.
SC	Secondary Capture.
SCP	DICOM Service Class Provider (DICOM Server).
SCU	DICOM Service Class User (DICOM Client).
SOP	DICOM Service-Object Pair.
US	Ultrasound.
XA	X-Ray Angiographic.

**Table 1: Abbreviations and Terms.**

### 3.4 References

Reference ID	Description
	Digital Imaging and Communications in Medicine (DICOM), NEMA PS3.1-3.21, 2021d. National Electrical Manufacturers Association (NEMA), 1300N 17th Street, Rosslyn, Virginia 22209, USA.



## 4 Networking

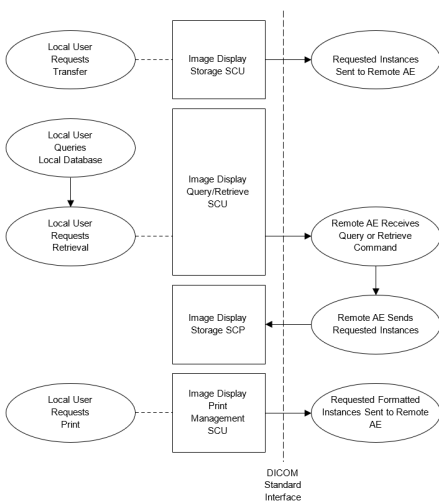
### 4.1 Implementation Model

The Vitrea Read Image Display DICOM Networking Services are implemented in a number of processes launched and terminated by the user.

The Vitrea Read PACS Workflow Manager, launched at user login, provides DICOM Services to query and transfer DICOM Instances via the Query/Retrieve SCU and the Storage SCU Application Entities.

The Vitrea Read CAMs, which are launched from the Vitrea Read PACS Workflow Manager, provides DICOM Services to retrieve and present DICOM Instances via the Query/Retrieve SCU and Storage SCP Application Entities. Moreover, the Vitrea Read General 2D CAM provides DICOM Services to store Grayscale Softcopy Presentation States, Key Objects and Secondary Captures via the Storage SCU Application Entity and DICOM services related to hardcopy printing via the Print Management SCU Application Entity. The Vitrea Read General 3D CAM provides DICOM Service to store private SOP-class 3D softcopy presentation states via the Storage SCU Application Entity.

#### 4.1.1 Application Data Flow



**Figure 1: Application Data Flow Diagram.**

#### 4.1.2 Functional Definitions of AE's

##### Functional Definition: Query/Retrieve SCU

The Query/Retrieve SCU Application Entity provides DICOM Services to query and retrieve DICOM Instances from remote DICOM Application Entities.

The Query/Retrieve SCU Application Entity does not always query a remote DICOM Application Entities about images before retrieving the images. The Query/Retrieve SCU may also use the information in the internal database to obtain information on available studies. The internal database is updated by Vitrea Read VPS.

The Query/Retrieve SCU Application Entity Provides DICOM Services to:

- Query and retrieve DICOM Instances from remote DICOM Application Entities using the DICOM Query/Retrieve SOP (Acting as SCU).

#### Functional Definition: Storage SCU

The Storage SCU Application Entity provides DICOM Services to transfer DICOM Instances to a remote DICOM Application Entity. This Application Entity is intended to be used to transfer DICOM Instances to the local image display, i.e. transfer images from a local CD-ROM/DVD drive to the local archive.

Note: the Vitrea Read Image Display supports transfer of DICOM Instances, which are not supported for displayed, i.e. the Storage SCU is capable of transferring Nuclear Medicine images, which currently cannot be displayed.

The Storage SCU Application Entity Provides DICOM Services to:

- Transfer DICOM Instances to a remote DICOM Application Entity using a number of DICOM Image Storage SOPs (Acting as SCU).

#### Functional Definition: Storage SCP

- The Storage SCP Application Entity provides DICOM Services to receive images and other DICOM Instances from remote DICOM Application Entities.

The Storage SCP Application Entity Provides DICOM Services to:

- Receive DICOM Instances from remote DICOM Application Entities using a number of DICOM Image Storage SOPs (Acting as SCP).

#### Functional Definition: Print Management SCU

The Print Management SCU Application Entity provides DICOM Services to print grayscale images including Presentation LUTs and Annotations on a remote DICOM Application Entity.

The Print Management SCU Application Entity Provides DICOM Services to:

- Print Grayscale Images incl. an optional Presentation LUT to remote DICOM Application Entities using the DICOM Basic Grayscale Print Management Meta SOP Class (Acting as SCU) and the DICOM Presentation LUT SOP Class (Acting as SCU).
- Print annotations to DICOM peer Application Entities using the DICOM Basic Annotation Box SOP (Acting as SCU).

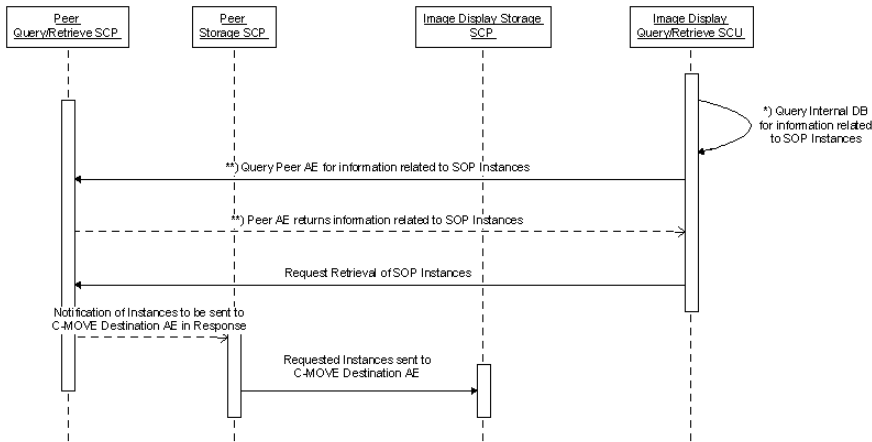
### 4.1.3 Sequencing of Real World Activities

The sequencing constraints for the Vitrea Read Image Display Application Entities can be seen on Figure 2, Figure 3 and Figure 4.

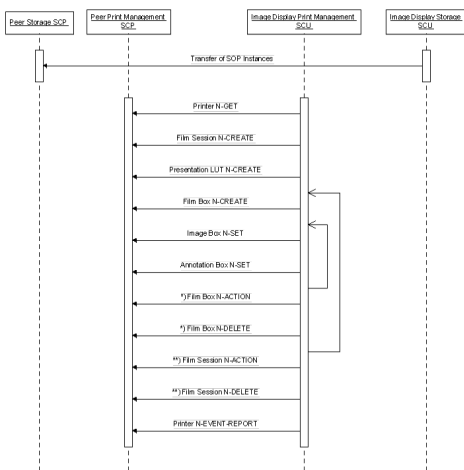
The Query/Retrieve SCU may either query the internal DB or a Peer AE for information on SOP Instances, so either the transaction marked by \*) is used or the transaction marked by \*\*), see Figure 2.

The Print Management SCU will not update an instance of the Basic Grayscale Image Box SOP Class before it has been received by the Image Display Storage SCP.

If collation is disabled, the Print Management SCU will send the two transactions marked by \*), otherwise the two transactions marked by \*\*) are sent – see Figure 3.



**Figure 2: Storage SCP and Query/Retrieve SCU: Sequencing Constraints.**



**Figure 3: Storage SCU and Print Management SCU: Sequencing Constraints.**

## 4.2 AE Specifications

### 4.2.1 AE Specification: Query/Retrieve SCU

#### SOP Classes

The Query/Retrieve SCU provides Standard Conformance to the SOP Classes listed in Table 4.

SOP Class Name	SOP Class UID	SCU	SCP
Query/Retrieve			
Study Root Q/R Information Model - FIND	1.2.840.10009.0.1.4.1.2.2.1	Yes	No

Study Root Q/R Information Model – MOVE	1.2.840.10009.0.1.4.1.2.2.2	Yes	No
---	-----------------------------	-----	----

**Table 2: Query/Retrieve SCU: Supported SOP Classes.**

## Association Policies

### General

The Query/Retrieve SCU will propose Association Requests for DICOM Query/Retrieve Service. The DICOM standard application context name for DICOM 3.0 is always proposed, see Table 5.

Application Context Name	1.2.840.10008.3.1.1.1
--------------------------	-----------------------

**Table 5: Query/Retrieve SCU: DICOM Application Context.**

### Number of Associations

The Query/Retrieve SCU does not support multiple simultaneous associations, see Table 6.

Maximum number of simultaneous associations	1 – Configurable.
---	-------------------

**Table 6: Query/Retrieve SCU: Number of simultaneous associations.**

### Asynchronous Nature

The Query/Retrieve SCU does not support asynchronous communication. Multiple outstanding transactions are not supported, see Table 7.

Maximum number of outstanding asynchronous transactions	1 – Configurable.
---	-------------------

**Table 7: Query/Retrieve SCU: Asynchronous nature.**

## Implementation Identifying Information

The identifying information for the Query/Retrieve SCU can be seen in Table 8.

Implementation Class UID	1.3.6.1.4.1.16978.0.3.5.4.31
Implementation Version Name	EV-3.5.4-31

**Table 8: Query/Retrieve SCU: DICOM Implementation Class and Version.**

## Association Initiation Policy

### Activity: Query Instances

#### Description and Sequencing of Activities

The Query/Retrieve SCU sends an Association Request to a remote DICOM Application Entity acting as Query/Retrieve SCP when the user queries a PACS from the Vitrea Read Workflow Manager. Note that by default, worklist in the Vitrea Read Workflow Manager are populated using the internal database. Sequencing constraints for the Query Instances activity can be seen in Figure 2.

### Proposed Presentation Contexts

The Query/Retrieve SCU will propose the Presentation Context listen in Table 9: Query/Retrieve SCU: Proposed Presentation Contexts for the Query Instances activity for the Query Instances activity.

Abstract Syntax		Transfer Syntax		Role	Ext. Neg
Name	UID	Name List	UID List		
Study Root Q/R Information Model – FIND	1.2.840.10009.0.1.4.1.2.2.1	Implicit VR Little Endian Explicit VR Little Endian Explicit VR Big Endian	1.2.840.10008.1.2 1.2.840.10008.1.2.1 1.2.840.10008.1.2.2	SCU	Relational-retrieval

**Table 9: Query/Retrieve SCU: Proposed Presentation Contexts for the Query Instances activity.**

### Extended Negotiation

The Query/Retrieve SCU will try to negotiate Relational-Retrieval with the Peer Application Entity acting as Query/Retrieve SCP. If the Query/Retrieve SCU fails to negotiate Relational-Retrieval, then only baseline SCU behavior is performed.

### Activity: Retrieve Instances

#### Description and Sequencing of Activities

The Query/Retrieve SCU sends an Association Request to a remote DICOM Application Entity acting as Query/Retrieve SCP when the user launches a CAM from the Vitrea Read Workflow Manager. Sequencing constraints for the Retrieve Instances activity can be seen in Figure 2.

### Proposed Presentation Contexts

The Query/Retrieve SCU will propose the Presentation Contexts listed in Table 10 for the Retrieve Instances activity.

Abstract Syntax		Transfer Syntax		Role	Ext. Neg
Name	UID	Name List	UID List		
Study Root Q/R Information Model – MOVE	1.2.840.10009.0.1.4.1.2.2.2	Implicit VR Little Endian Explicit VR Little Endian Explicit VR Big Endian	1.2.840.10008.1.2 1.2.840.10008.1.2.1 1.2.840.10008.1.2.2	SCU	Relational-retrieval

**Table 10: Query/Retrieve SCU: Proposed Presentation Contexts for the Retrieve Instances activity.**

### Extended Negotiation

The Query/Retrieve SCU will try to negotiate Relational-Retrieval with the Peer Application Entity acting as Query/Retrieve SCP. If the Query/Retrieve SCU fails to negotiate Relational-Retrieval with the Query/Retrieve SCP, then only baseline SCU behavior is performed.

### Association Acceptance Policy

The Query/Retrieve SCU does not accept associations.

## 4.2.2 AE Specification: Storage SCU

### SOP Classes

The Storage SCU provides Standard Conformance to the SOP Classes listed in Table 11.

SOP Class Name	SOP Class UID	SCU	SCP
<i>Transfer</i>			
Computed Radiography Image Storage	1.2.840.10009.0.1.4.1.1.1	Yes	No
Digital X-Ray Image Storage – For Presentation	1.2.840.10009.0.1.4.1.1.1.1	Yes	No
Digital X-Ray Image Storage – For Processing	1.2.840.10009.0.1.4.1.1.1.1.1	Yes	No
Digital Mammography X-Ray Image Storage – For Presentation	1.2.840.10009.0.1.4.1.1.1.2	Yes	No
Digital Mammography X-Ray Image Storage – For Processing	1.2.840.10009.0.1.4.1.1.1.2.1	Yes	No
Breast Tomosynthesis Image Storage	1.2.840.10009.0.1.4.1.1.13.1.3	Yes	No
Digital Intra-oral X-Ray Image Storage – For Presentation	1.2.840.10009.0.1.4.1.1.1.3	Yes	No
Visible Light Image Storage (Retired)	1.2.840.10009.0.1.4.1.1.1.3.1.1	Yes	No
CT Image Storage	1.2.840.10009.0.1.4.1.1.2	Yes	No
Enhanced CT Image Storage	1.2.840.10009.0.1.4.1.1.2.1	Yes	No
Ultrasound Multi-frame Image Storage (Retired)	1.2.840.10009.0.1.4.1.1.3	Yes	No
Ultrasound Multi-frame Image Storage	1.2.840.10009.0.1.4.1.1.3.1	Yes	No
MR Image Storage	1.2.840.10009.0.1.4.1.1.4	Yes	No
Enhanced MR Image Storage	1.2.840.10009.0.1.4.1.1.4.1	Yes	No
Nuclear Medicine Image Storage (Retired)	1.2.840.10009.0.1.4.1.1.5	Yes	No
Ultrasound Image Storage (Retired)	1.2.840.10009.0.1.4.1.1.6	Yes	No
Ultrasound Image Storage	1.2.840.10009.0.1.4.1.1.6.1	Yes	No

SOP Class Name	SOP Class UID	SCU	SCP
Secondary Capture Image Storage	1.2.840.10009.0.1.4.1.1.7	Yes	No
Multi-frame Grayscale Byte Secondary Capture Image Storage	1.2.840.10009.0.1.4.1.1.7.2	Yes	No
Multi-frame Grayscale Word Secondary Capture Image Store	1.2.840.10009.0.1.4.1.1.7.3	Yes	No
Multi-frame True Color Secondary Capture Image Storage	1.2.840.10009.0.1.4.1.1.7.4	Yes	No
Grayscale Softcopy Presentation State Storage SOP Class	1.2.840.10009.0.1.4.1.1.11.1	Yes	No
Color Softcopy Presentation State Storage SOP Class	1.2.840.10009.0.1.4.1.1.11.2	Yes	No
Pseudo-Color Softcopy Presentation State Storage SOP Class	1.2.840.10009.0.1.4.1.1.11.3	Yes	No
Grayscale Planar MPR Volumetric Presentation State Storage	1.2.840.10009.0.1.4.1.1.11.6	Yes	No
X-Ray Angiographic Image Storage	1.2.840.10009.0.1.4.1.1.12.1	Yes	No
Enhanced X-Ray Angiographic Image Storage	1.2.840.10009.0.1.4.1.1.12.1.1	Yes	No
X-Ray Radiofluoroscopic Image Storage	1.2.840.10009.0.1.4.1.1.12.2	Yes	No
Enhanced X-Ray Radiofluoroscopic Image Storage	1.2.840.10009.0.1.4.1.1.12.2.1	Yes	No
Nuclear Medicine Image Storage	1.2.840.10009.0.1.4.1.1.20	Yes	No
Spatial Fiducials Storage	1.2.840.10009.0.1.4.1.1.66.2	Yes	No
VL Endoscopic Image Storage	1.2.840.10009.0.1.4.1.1.77.1.1	Yes	No
Video Endoscopic Image Storage	1.2.840.10009.0.1.4.1.1.77.1.1.1	Yes	No
VL Microscopic Image Storage	1.2.840.10009.0.1.4.1.1.77.1.2	Yes	No
Video Microscopic Image Storage	1.2.840.10009.0.1.4.1.1.77.1.2.1	Yes	No
VL Slide-Coordinates Microscopic Image Storage	1.2.840.10009.0.1.4.1.1.77.1.3	Yes	No
VL Photographic Image Storage	1.2.840.10009.0.1.4.1.1.77.1.4	Yes	No

SOP Class Name	SOP Class UID	SCU	SCP
Video Photographic Image Storage	1.2.840.10009.0.1.4.1.1.77.1.4.1	Yes	No
Ophthalmic Photographic 8 Bit Image Storage	1.2.840.10009.0.1.4.1.1.77.1.5.1	Yes	No
Ophthalmic Photographic 16 Bit Image Storage	1.2.840.10009.0.1.4.1.1.77.1.5.2	Yes	No
Basic Text SR Storage	1.2.840.10009.0.1.4.1.1.88.11	Yes	No
Enhanced SR Storage	1.2.840.10009.0.1.4.1.1.88.22	Yes	No
Comprehensive SR Storage	1.2.840.10009.0.1.4.1.1.88.33	Yes	No
Mammography CAD SR Storage	1.2.840.10009.0.1.4.1.1.89.00	Yes	No
Key Object Selection Document	1.2.840.10009.0.1.4.1.1.89.09	Yes	No
Encapsulated PDF Storage	1.2.840.10009.0.1.4.1.1.104.1	Yes	No
Positron Emission Tomography Image Storage	1.2.840.10009.0.1.4.1.1.128	Yes	No
MI 3D Softcopy Presentation State	1.3.6.1.4.1.16978.3.1	Yes	No
Fuji CR	1.2.392.200036.9125.1.1.2	Yes	No
Encapsulated STL	1.2.840.10009.0.1.4.1.1.104.3	Yes	No

**Table 11: Storage SCU: Supported SOP Classes.**

## Association Policies

### General

The Storage SCU will propose Association Requests for DICOM Storage Services. The DICOM standard application context name for DICOM 3.0 is always proposed, see Table 12.

Application Context Name	1.2.840.10008.3.1.1.1
--------------------------	-----------------------

**Table 12: Storage SCU: DICOM Application Context.**

### Number of Associations

The Storage SCU does not support multiple simultaneous associations, see Table 13.

Maximum number of simultaneous associations	1 – Configurable.
---	-------------------

**Table 13: Storage SCU: Number of simultaneous associations.**



### Asynchronous Nature

The Storage SCU does not support asynchronous communication. Multiple outstanding transactions are not supported, see Table 14.

Maximum number of outstanding asynchronous transactions	1 – Configurable.
---	-------------------

**Table 14: Storage SCU: Asynchronous nature.**

### Implementation Identifying Information

The identifying information for the Storage SCU can be seen in Table 15.

Implementation Class UID	1.3.6.1.4.1.16978.0.3.5.4.31
Implementation Version Name	EV-3.5.4-31

**Table 15: Storage SCU: DICOM Implementation Class and Version.**

### Association Initiation Policy

Activity: Transfer Instances

#### Description and Sequencing of Activities

The Storage SCU sends an Association Request to a remote DICOM Application Entity acting as Storage SCP when the selects import in the Vitrea Read Workflow Manager. This is intended to be used to import selected DICOM Instances from CD-ROM/DVD to the local archive.

#### Proposed Presentation Contexts

The Storage SCU will propose the Presentation Contexts listed in Table 16 for the Transfer Instances activity.

Abstract Syntax		Transfer Syntax		Role	Ext. Neg
Name	UID	Name List	UID List		
Computed Radiography Image Storage	1.2.840.10009.0.1.4.1.1.1	Implicit VR Little Endian Explicit VR Little Endian Explicit VR Big Endian	1.2.840.10008.1.2 1.2.840.10008.1.2.1 1.2.840.10008.1.2.2	SCU	None
Digital X-Ray Image Storage – For Presentation	1.2.840.10009.0.1.4.1.1.1.1	Implicit VR Little Endian Explicit VR Little Endian Explicit VR Big Endian	1.2.840.10008.1.2 1.2.840.10008.1.2.1 1.2.840.10008.1.2.2	SCU	None
Digital X-Ray Image Storage – For Processing	1.2.840.10009.0.1.4.1.1.1.1.1	Implicit VR Little Endian Explicit VR Little Endian Explicit VR Big Endian	1.2.840.10008.1.2 1.2.840.10008.1.2.1 1.2.840.10008.1.2.2	SCU	None
Digital Mammography X-Ray Image Storage – For Presentation	1.2.840.10009.0.1.4.1.1.1.2	Implicit VR Little Endian Explicit VR Little Endian Explicit VR Big Endian	1.2.840.10008.1.2 1.2.840.10008.1.2.1 1.2.840.10008.1.2.2	SCU	None

Abstract Syntax		Transfer Syntax		Role	Ext. Neg
Name	UID	Name List	UID List		
Digital Mammography X-Ray Image Storage – For Processing	1.2.840.10009.0.1.4.1.1.2.1	Implicit VR Little Endian Explicit VR Little Endian Explicit VR Big Endian	1.2.840.10008.1.2 1.2.840.10008.1.2.1 1.2.840.10008.1.2.2	SCU	None
Breast Tomosynthesis Image Storage	1.2.840.10009.0.1.4.1.1.13.1.3	Implicit VR Little Endian Explicit VR Little Endian Explicit VR Big Endian	1.2.840.10008.1.2 1.2.840.10008.1.2.1 1.2.840.10008.1.2.2	SCU	None
Digital Intra-oral X-Ray Image Storage – For Presentation	1.2.840.10009.0.1.4.1.1.1.3	Implicit VR Little Endian Explicit VR Little Endian Explicit VR Big Endian	1.2.840.10008.1.2 1.2.840.10008.1.2.1 1.2.840.10008.1.2.2	SCU	None
Visible Light Image Storage (Retired)	1.2.840.10009.0.1.4.1.1.1.3.1.1	Implicit VR Little Endian Explicit VR Little Endian Explicit VR Big Endian	1.2.840.10008.1.2 1.2.840.10008.1.2.1 1.2.840.10008.1.2.2	SCU	None
CT Image Storage	1.2.840.10009.0.1.4.1.1.2	Implicit VR Little Endian Explicit VR Little Endian Explicit VR Big Endian	1.2.840.10008.1.2 1.2.840.10008.1.2.1 1.2.840.10008.1.2.2	SCU	None
Enhanced CT Image Storage	1.2.840.10009.0.1.4.1.1.2.1	Implicit VR Little Endian Explicit VR Little Endian Explicit VR Big Endian	1.2.840.10008.1.2 1.2.840.10008.1.2.1 1.2.840.10008.1.2.2	SCU	None
Ultrasound Multi-frame Image Storage (Retired)	1.2.840.10009.0.1.4.1.1.3	Implicit VR Little Endian Explicit VR Little Endian Explicit VR Big Endian	1.2.840.10008.1.2 1.2.840.10008.1.2.1 1.2.840.10008.1.2.2	SCU	None
Ultrasound Multi-frame Image Storage	1.2.840.10009.0.1.4.1.1.3.1	Implicit VR Little Endian Explicit VR Little Endian Explicit VR Big Endian	1.2.840.10008.1.2 1.2.840.10008.1.2.1 1.2.840.10008.1.2.2	SCU	None
MR Image Storage	1.2.840.10009.0.1.4.1.1.4	Implicit VR Little Endian Explicit VR Little Endian Explicit VR Big Endian	1.2.840.10008.1.2 1.2.840.10008.1.2.1 1.2.840.10008.1.2.2	SCU	None
Enhanced MR Image Storage	1.2.840.10009.0.1.4.1.1.4.1	Implicit VR Little Endian Explicit VR Little Endian Explicit VR Big Endian	1.2.840.10008.1.2 1.2.840.10008.1.2.1 1.2.840.10008.1.2.2	SCU	None
Nuclear Medicine Image Storage (Retired)	1.2.840.10009.0.1.4.1.1.5	Implicit VR Little Endian Explicit VR Little Endian Explicit VR Big Endian	1.2.840.10008.1.2 1.2.840.10008.1.2.1 1.2.840.10008.1.2.2	SCU	None
Ultrasound Image Storage (Retired)	1.2.840.10009.0.1.4.1.1.6	Implicit VR Little Endian Explicit VR Little Endian Explicit VR Big Endian	1.2.840.10008.1.2 1.2.840.10008.1.2.1 1.2.840.10008.1.2.2	SCU	None

Abstract Syntax		Transfer Syntax		Role	Ext. Neg
Name	UID	Name List	UID List		
Ultrasound Image Storage	1.2.840.10009.0.1.4.1.1.6.1	Implicit VR Little Endian Explicit VR Little Endian Explicit VR Big Endian	1.2.840.10008.1.2 1.2.840.10008.1.2.1 1.2.840.10008.1.2.2	SCU	None
Secondary Capture Image Storage	1.2.840.10009.0.1.4.1.1.7	Implicit VR Little Endian Explicit VR Little Endian Explicit VR Big Endian	1.2.840.10008.1.2 1.2.840.10008.1.2.1 1.2.840.10008.1.2.2	SCU	None
Multi-frame Grayscale Byte Secondary Capture Image Storage	1.2.840.10009.0.1.4.1.1.7.2	Implicit VR Little Endian Explicit VR Little Endian Explicit VR Big Endian	1.2.840.10008.1.2 1.2.840.10008.1.2.1 1.2.840.10008.1.2.2	SCU	None
Multi-frame Grayscale Word Secondary Capture Image Store	1.2.840.10009.0.1.4.1.1.7.3	Implicit VR Little Endian Explicit VR Little Endian Explicit VR Big Endian	1.2.840.10008.1.2 1.2.840.10008.1.2.1 1.2.840.10008.1.2.2	SCU	None
Multi-frame True Color Secondary Capture Image Storage	1.2.840.10009.0.1.4.1.1.7.4	Implicit VR Little Endian Explicit VR Little Endian Explicit VR Big Endian	1.2.840.10008.1.2 1.2.840.10008.1.2.1 1.2.840.10008.1.2.2	SCU	None
Grayscale Softcopy Presentation State Storage SOP Class	1.2.840.10009.0.1.4.1.1.11.1	Implicit VR Little Endian Explicit VR Little Endian Explicit VR Big Endian	1.2.840.10008.1.2 1.2.840.10008.1.2.1 1.2.840.10008.1.2.2	SCU	None
Color Softcopy Presentation State Storage SOP Class	1.2.840.10009.0.1.4.1.1.11.2	Implicit VR Little Endian Explicit VR Little Endian Explicit VR Big Endian	1.2.840.10008.1.2 1.2.840.10008.1.2.1 1.2.840.10008.1.2.2	SCU	None
Pseudo-Color Softcopy Presentation State Storage SOP Class	1.2.840.10009.0.1.4.1.1.11.3	Implicit VR Little Endian Explicit VR Little Endian Explicit VR Big Endian	1.2.840.10008.1.2 1.2.840.10008.1.2.1 1.2.840.10008.1.2.2	SCU	None
Grayscale Planar MPR Volumetric Presentation State	1.2.840.10009.0.1.4.1.1.11.6	Implicit VR Little Endian Explicit VR Little Endian Explicit VR Big Endian	1.2.840.10008.1.2 1.2.840.10008.1.2.1 1.2.840.10008.1.2.2	SCU	None
X-Ray Angiographic Image Storage	1.2.840.10009.0.1.4.1.1.12.1	Implicit VR Little Endian Explicit VR Little Endian Explicit VR Big Endian	1.2.840.10008.1.2 1.2.840.10008.1.2.1 1.2.840.10008.1.2.2	SCU	None
Enhanced X-Ray Angiographic Image Storage	1.2.840.10009.0.1.4.1.1.12.1.1	Implicit VR Little Endian Explicit VR Little Endian Explicit VR Big Endian	1.2.840.10008.1.2 1.2.840.10008.1.2.1 1.2.840.10008.1.2.2	SCU	None
X-Ray Radiofluoroscopic Image Storage	1.2.840.10009.0.1.4.1.1.12.2	Implicit VR Little Endian Explicit VR Little Endian Explicit VR Big Endian	1.2.840.10008.1.2 1.2.840.10008.1.2.1 1.2.840.10008.1.2.2	SCU	None

Abstract Syntax		Transfer Syntax		Role	Ext. Neg
Name	UID	Name List	UID List		
Enhanced X-Ray Radiofluoroscopic Image Storage	1.2.840.10009.0.1.4.1.1.12.2.1	Implicit VR Little Endian Explicit VR Little Endian Explicit VR Big Endian	1.2.840.10008.1.2 1.2.840.10008.1.2.1 1.2.840.10008.1.2.2	SCU	None
Nuclear Medicine Image Storage	1.2.840.10009.0.1.4.1.1.20	Implicit VR Little Endian Explicit VR Little Endian Explicit VR Big Endian	1.2.840.10008.1.2 1.2.840.10008.1.2.1 1.2.840.10008.1.2.2	SCU	None
Spatial Fiducials Storage	1.2.840.10009.0.1.4.1.1.66.2	Implicit VR Little Endian Explicit VR Little Endian Explicit VR Big Endian	1.2.840.10008.1.2 1.2.840.10008.1.2.1 1.2.840.10008.1.2.2	SCU	None
VL Endoscopic Image Storage	1.2.840.10009.0.1.4.1.1.77.1.1	Implicit VR Little Endian Explicit VR Little Endian Explicit VR Big Endian	1.2.840.10008.1.2 1.2.840.10008.1.2.1 1.2.840.10008.1.2.2	SCU	None
Video Endoscopic Image Storage	1.2.840.10009.0.1.4.1.1.77.1.1.1	Implicit VR Little Endian Explicit VR Little Endian Explicit VR Big Endian	1.2.840.10008.1.2 1.2.840.10008.1.2.1 1.2.840.10008.1.2.2	SCU	None
VL Microscopic Image Storage	1.2.840.10009.0.1.4.1.1.77.1.2	Implicit VR Little Endian Explicit VR Little Endian Explicit VR Big Endian	1.2.840.10008.1.2 1.2.840.10008.1.2.1 1.2.840.10008.1.2.2	SCU	None
Video Microscopic Image Storage	1.2.840.10009.0.1.4.1.1.77.1.2.1	Implicit VR Little Endian Explicit VR Little Endian Explicit VR Big Endian	1.2.840.10008.1.2 1.2.840.10008.1.2.1 1.2.840.10008.1.2.2	SCU	None
VL Slide-Coordinates Microscopic Image Storage	1.2.840.10009.0.1.4.1.1.77.1.3	Implicit VR Little Endian Explicit VR Little Endian Explicit VR Big Endian	1.2.840.10008.1.2 1.2.840.10008.1.2.1 1.2.840.10008.1.2.2	SCU	None
VL Photographic Image Storage	1.2.840.10009.0.1.4.1.1.77.1.4	Implicit VR Little Endian Explicit VR Little Endian Explicit VR Big Endian	1.2.840.10008.1.2 1.2.840.10008.1.2.1 1.2.840.10008.1.2.2	SCU	None
Video Photographic Image Storage	1.2.840.10009.0.1.4.1.1.77.1.4.1	Implicit VR Little Endian Explicit VR Little Endian Explicit VR Big Endian	1.2.840.10008.1.2 1.2.840.10008.1.2.1 1.2.840.10008.1.2.2	SCU	None
Ophthalmic Photographic 8 Bit Image Storage	1.2.840.10009.0.1.4.1.1.77.1.5.1	Implicit VR Little Endian Explicit VR Little Endian Explicit VR Big Endian	1.2.840.10008.1.2 1.2.840.10008.1.2.1 1.2.840.10008.1.2.2	SCU	None
Ophthalmic Photographic 16 Bit Image Storage	1.2.840.10009.0.1.4.1.1.77.1.5.2	Implicit VR Little Endian Explicit VR Little Endian Explicit VR Big Endian	1.2.840.10008.1.2 1.2.840.10008.1.2.1 1.2.840.10008.1.2.2	SCU	None

Abstract Syntax		Transfer Syntax		Role	Ext. Neg
Name	UID	Name List	UID List		
Basic Text SR	1.2.840.10009.0.1.4.1.1.88.11	Implicit VR Little Endian Explicit VR Little Endian Explicit VR Big Endian	1.2.840.10008.1.2 1.2.840.10008.1.2.1 1.2.840.10008.1.2.2	SCU	None
Enhanced SR	1.2.840.10009.0.1.4.1.1.88.22	Implicit VR Little Endian Explicit VR Little Endian Explicit VR Big Endian	1.2.840.10008.1.2 1.2.840.10008.1.2.1 1.2.840.10008.1.2.2	SCU	None
Comprehensive SR	1.2.840.10009.0.1.4.1.1.88.33	Implicit VR Little Endian Explicit VR Little Endian Explicit VR Big Endian	1.2.840.10008.1.2 1.2.840.10008.1.2.1 1.2.840.10008.1.2.2	SCU	None
Mammography CAD SR	1.2.840.10009.0.1.4.1.1.89.00	Implicit VR Little Endian Explicit VR Little Endian Explicit VR Big Endian	1.2.840.10008.1.2 1.2.840.10008.1.2.1 1.2.840.10008.1.2.2	SCU	None
Key Object Selection Document	1.2.840.10009.0.1.4.1.1.89.09	Implicit VR Little Endian Explicit VR Little Endian Explicit VR Big Endian	1.2.840.10008.1.2 1.2.840.10008.1.2.1 1.2.840.10008.1.2.2	SCU	None
Encapsulated PDF Storage	1.2.840.10009.0.1.4.1.1.104.1	Implicit VR Little Endian Explicit VR Little Endian Explicit VR Big Endian	1.2.840.10008.1.2 1.2.840.10008.1.2.1 1.2.840.10008.1.2.2	SCU	None
Positron Emission Tomography Image Storage	1.2.840.10009.0.1.4.1.1.128	Implicit VR Little Endian Explicit VR Little Endian Explicit VR Big Endian	1.2.840.10008.1.2 1.2.840.10008.1.2.1 1.2.840.10008.1.2.2	SCU	None
MI 3D Softcopy Presentation State	1.3.6.1.4.1.16978.3.1	Implicit VR Little Endian Explicit VR Little Endian Explicit VR Big Endian	1.2.840.10008.1.2 1.2.840.10008.1.2.1 1.2.840.10008.1.2.2	SCU	None
Fuji CR	1.2.392.200036.9125.1.1.2	Implicit VR Little Endian Explicit VR Little Endian Explicit VR Big Endian	1.2.840.10008.1.2 1.2.840.10008.1.2.1 1.2.840.10008.1.2.2	SCU	None
Encapsulated STL	1.2.840.10009.0.1.4.1.1.104.3	Implicit VR Little Endian Explicit VR Little Endian Explicit VR Big Endian	1.2.840.10008.1.2 1.2.840.10008.1.2.1 1.2.840.10008.1.2.2	SCU	None

**Table 16: Storage SCU: Proposed Presentation Contexts for the Transfer Instances activity.**

Extended Negotiation

No extended negotiation is performed.

Association Acceptance Policy

The Storage SCU does not accept associations.

### 4.2.3 AE Specification: Storage SCP

#### SOP Classes

The Storage SCP provides Standard Conformance to the SOP Classes listed in Table 17.

SOP Class Name	SOP Class UID	SCU	SCP
<i>Transfer</i>			
Computed Radiography Image Storage	1.2.840.10009.0.1.4.1.1.1	No	Yes
Digital X-Ray Image Storage – For Presentation	1.2.840.10009.0.1.4.1.1.1.1	No	Yes
Digital X-Ray Image Storage – For Processing	1.2.840.10009.0.1.4.1.1.1.1.1	No	Yes
Digital Mammography X-Ray Image Storage – For Presentation	1.2.840.10009.0.1.4.1.1.1.2	No	Yes
Digital Mammography X-Ray Image Storage – For Processing	1.2.840.10009.0.1.4.1.1.1.2.1	No	Yes
Breast Tomosynthesis Image Storage	1.2.840.10009.0.1.4.1.1.13.1.3	No	Yes
Digital Intra-oral X-Ray Image Storage – For Presentation	1.2.840.10009.0.1.4.1.1.1.3	No	Yes
CT Image Storage	1.2.840.10009.0.1.4.1.1.2	No	Yes
Enhanced CT Image Storage	1.2.840.10009.0.1.4.1.1.2.1	No	Yes
Ultrasound Multi-frame Image Storage (Retired)	1.2.840.10009.0.1.4.1.1.3	No	Yes
Ultrasound Multi-frame Image Storage	1.2.840.10009.0.1.4.1.1.3.1	No	Yes
MR Image Storage	1.2.840.10009.0.1.4.1.1.4	No	Yes
Enhanced MR Image Storage	1.2.840.10009.0.1.4.1.1.4.1	No	Yes
Nuclear Medicine Image Storage (Retired)	1.2.840.10009.0.1.4.1.1.5	No	Yes
Ultrasound Image Storage (Retired)	1.2.840.10009.0.1.4.1.1.6	No	Yes
Ultrasound Image Storage	1.2.840.10009.0.1.4.1.1.6.1	No	Yes
Secondary Capture Image Storage	1.2.840.10009.0.1.4.1.1.7	No	Yes

SOP Class Name	SOP Class UID	SCU	SCP
Multi-frame Grayscale Byte Secondary Capture Image Storage	1.2.840.10009.0.1.4.1.1.7.2	No	Yes
Multi-frame Grayscale Word Secondary Capture Image Store	1.2.840.10009.0.1.4.1.1.7.3	No	Yes
Multi-frame True Color Secondary Capture Image Storage	1.2.840.10009.0.1.4.1.1.7.4	No	Yes
Grayscale Softcopy Presentation State Storage SOP Class	1.2.840.10009.0.1.4.1.1.11.1	No	Yes
Color Softcopy Presentation State Storage SOP Class	1.2.840.10009.0.1.4.1.1.11.2	No	Yes
Pseudo-Color Softcopy Presentation State Storage SOP Class	1.2.840.10009.0.1.4.1.1.11.3	No	Yes
Grayscale Planar MPR Volumetric Presentation State Storage	1.2.840.10009.0.1.4.1.1.11.6	No	Yes
X-Ray Angiographic Image Storage	1.2.840.10009.0.1.4.1.1.12.1	No	Yes
Enhanced X-Ray Angiographic Image Storage	1.2.840.10009.0.1.4.1.1.12.1.1	No	Yes
X-Ray Radiofluoroscopic Image Storage	1.2.840.10009.0.1.4.1.1.12.2	No	Yes
Enhanced X-Ray Radiofluoroscopic Image Storage	1.2.840.10009.0.1.4.1.1.12.2.1	No	Yes
Nuclear Medicine Image Storage	1.2.840.10009.0.1.4.1.1.20	No	Yes
Spatial Fiducials Storage	1.2.840.10009.0.1.4.1.1.66.2	No	Yes
VL Image Storage (retired)	1.2.840.10009.0.1.4.1.1.77.1	No	Yes
VL Endoscopic Image Storage	1.2.840.10009.0.1.4.1.1.77.1.1	No	Yes
Video Endoscopic Image Storage	1.2.840.10009.0.1.4.1.1.77.1.1.1	No	Yes
VL Microscopic Image Storage	1.2.840.10009.0.1.4.1.1.77.1.2	No	Yes
Video Microscopic Image Storage	1.2.840.10009.0.1.4.1.1.77.1.2.1	No	Yes
VL Slide-Coordinates Microscopic Image Storage	1.2.840.10009.0.1.4.1.1.77.1.3	No	Yes
VL Photographic Image Storage	1.2.840.10009.0.1.4.1.1.77.1.4	No	Yes

SOP Class Name	SOP Class UID	SCU	SCP
Video Photographic Image Storage	1.2.840.10009.0.1.4.1.1.77.1.4.1	No	Yes
Ophthalmic Photographic 8 Bit Image Storage	1.2.840.10009.0.1.4.1.1.77.1.5.1	No	Yes
Ophthalmic Photographic 16 Bit Image Storage	1.2.840.10009.0.1.4.1.1.77.1.5.2	No	Yes
Basic Text SR Storage	1.2.840.10009.0.1.4.1.1.88.11	No	Yes
Enhanced SR Storage	1.2.840.10009.0.1.4.1.1.88.22	No	Yes
Comprehensive SR Storage	1.2.840.10009.0.1.4.1.1.88.33	No	Yes
Mammography CAD SR Storage	1.2.840.10009.0.1.4.1.1.89.00	No	Yes
Key Object Selection Document	1.2.840.10009.0.1.4.1.1.89.09	No	Yes
Encapsulated PDF Storage	1.2.840.10009.0.1.4.1.1.104.1	No	Yes
Positron Emission Tomography Image Storage	1.2.840.10009.0.1.4.1.1.128	No	Yes
MI 3D Softcopy Presentation State	1.3.6.1.4.1.16978.3.1	No	Yes
Fuji CR	1.2.392.200036.9125.1.1.2	No	Yes
Encapsulated STL Storage	1.2.840.10009.0.1.4.1.1.104.3	No	Yes

**Table 17: Storage SCP: Supported SOP Classes.**

## Association Policies

### General

The Storage SCP will accept Association Requests for DICOM Storage Services. The DICOM standard application context name for DICOM 3.0 is always accepted, see Table 18.

Application Context Name	1.2.840.10008.3.1.1.1
--------------------------	-----------------------

**Table 18: Storage SCP: DICOM Application Context.**

### Number of Associations

The Storage SCP does not support multiple simultaneous associations, see Table 19.

Maximum number of simultaneous associations	1 – Configurable.
---	-------------------

**Table 19: Storage SCP: Number of simultaneous associations.**



### Asynchronous Nature

The Storage SCP does not support asynchronous communication. Multiple outstanding transactions are not supported, see Table 20.

Maximum number of outstanding asynchronous transactions	1 – Configurable.
---	-------------------

**Table 20: Storage SCP: Asynchronous nature.**

### Implementation Identifying Information

The identifying information for the Storage SCP can be seen in Table 21.

Implementation Class UID	1.3.6.1.4.1.16978.0.3.5.4.31
Implementation Version Name	EV-3.5.4-31

**Table 21: Storage SCP: DICOM Implementation Class and Version.**

### Association Initiation Policy

The Storage SCP does not initiate associations.

### Association Acceptance Policy

Activity: Receive Instances

### Description and Sequencing of Activities

A remote DICOM Application Entity acting as a Storage SCU may establish an association with the Storage SCP. The Storage SCP will accept these associations for the purpose of receiving supported SOP Class Instances. When the user launches a CAM from the Vitrea Read Workflow Manager, the CAM will initiate the Retrieve Instances activity as described in section 3.1.4.3. The C-MOVE request in the Retrieve Instances activity contains the Storage SCP as destination Application Entity.

### Accepted Presentation Contexts

The Storage SCP accepts the Application Presentation Contexts listed in Table 22.

Abstract Syntax		Transfer Syntax		Role	Ext. Neg
Name	UID	Name List	UID List		
Computed Radiography Image Storage	1.2.840.10009.0.1.4.1.1.1	Implicit VR Little Endian Explicit VR Little Endian Explicit VR Big Endian JPEG Baseline (Process 1) JPEG Extended (Process 2 & 4) JPEG Lossless, Non-Hierarchical (Process 14) JPEG Lossless, Non-Hierarchical, First-Order Prediction (Process 14 SV1) JPEG-LS Lossless Image Compression JPEG-LS Lossy (Near-Lossless) Image Compression RLE Lossless JPEG 2000 Lossless only JPEG 2000 Lossless or Lossy	1.2.840.10008.1.2 1.2.840.10008.1.2.1 1.2.840.10008.1.2.2 1.2.840.10008.1.2.4.50 1.2.840.10008.1.2.4.51  1.2.840.10008.1.2.4.57  1.2.840.10008.1.2.4.70  1.2.840.10008.1.2.4.80  1.2.840.10008.1.2.4.81  1.2.840.10008.1.2.5 1.2.840.10008.1.2.4.90 1.2.840.10008.1.2.4.91	SCP	None
Digital X-Ray Image Storage – For Presentation	1.2.840.10009.0.1.4.1.1.1.1	Implicit VR Little Endian Explicit VR Little Endian Explicit VR Big Endian JPEG Baseline (Process 1) JPEG Extended (Process 2 & 4) JPEG Lossless, Non-Hierarchical (Process 14) JPEG Lossless, Non-Hierarchical, First-Order Prediction (Process 14 SV1) JPEG-LS Lossless Image Compression JPEG-LS Lossy (Near-Lossless) Image Compression RLE Lossless JPEG 2000 Lossless only JPEG 2000 Lossless or Lossy	1.2.840.10008.1.2 1.2.840.10008.1.2.1 1.2.840.10008.1.2.2 1.2.840.10008.1.2.4.50 1.2.840.10008.1.2.4.51  1.2.840.10008.1.2.4.57  1.2.840.10008.1.2.4.70  1.2.840.10008.1.2.4.80  1.2.840.10008.1.2.4.81  1.2.840.10008.1.2.5 1.2.840.10008.1.2.4.90 1.2.840.10008.1.2.4.91	SCP	None

Abstract Syntax		Transfer Syntax		Role	Ext. Neg
Name	UID	Name List	UID List		
Digital X-Ray Image Storage – For Processing	1.2.840.10009.0.1.4.1.1.1.1	Implicit VR Little Endian Explicit VR Little Endian Explicit VR Big Endian JPEG Baseline (Process 1) JPEG Extended (Process 2 & 4) JPEG Lossless, Non-Hierarchical (Process 14) JPEG Lossless, Non-Hierarchical, First-Order Prediction (Process 14 SV1) JPEG-LS Lossless Image Compression JPEG-LS Lossy (Near-Lossless) Image Compression RLE Lossless JPEG 2000 Lossless only JPEG 2000 Lossless or Lossy	1.2.840.10008.1.2 1.2.840.10008.1.2.1 1.2.840.10008.1.2.2 1.2.840.10008.1.2.4.50 1.2.840.10008.1.2.4.51  1.2.840.10008.1.2.4.57  1.2.840.10008.1.2.4.70  1.2.840.10008.1.2.4.80  1.2.840.10008.1.2.4.81  1.2.840.10008.1.2.5 1.2.840.10008.1.2.4.90 1.2.840.10008.1.2.4.91	SCP	None
Digital Mammography X-Ray Image Storage – For Presentation	1.2.840.10009.0.1.4.1.1.1.2	Implicit VR Little Endian Explicit VR Little Endian Explicit VR Big Endian JPEG Baseline (Process 1) JPEG Extended (Process 2 & 4) JPEG Lossless, Non-Hierarchical (Process 14) JPEG Lossless, Non-Hierarchical, First-Order Prediction (Process 14 SV1) JPEG-LS Lossless Image Compression JPEG-LS Lossy (Near-Lossless) Image Compression RLE Lossless JPEG 2000 Lossless only JPEG 2000 Lossless or Lossy	1.2.840.10008.1.2 1.2.840.10008.1.2.1 1.2.840.10008.1.2.2 1.2.840.10008.1.2.4.50 1.2.840.10008.1.2.4.51  1.2.840.10008.1.2.4.57  1.2.840.10008.1.2.4.70  1.2.840.10008.1.2.4.80  1.2.840.10008.1.2.4.81  1.2.840.10008.1.2.5 1.2.840.10008.1.2.4.90 1.2.840.10008.1.2.4.91	SCP	None

Abstract Syntax		Transfer Syntax		Role	Ext. Neg
Name	UID	Name List	UID List		
Digital Mammography X-Ray Image Storage – For Processing	1.2.840.10009.0.1.4.1.1.1.2.1	Implicit VR Little Endian Explicit VR Little Endian Explicit VR Big Endian JPEG Baseline (Process 1) JPEG Extended (Process 2 & 4) JPEG Lossless, Non-Hierarchical (Process 14) JPEG Lossless, Non-Hierarchical, First-Order Prediction (Process 14 SV1) JPEG-LS Lossless Image Compression JPEG-LS Lossy (Near-Lossless) Image Compression RLE Lossless JPEG 2000 Lossless only JPEG 2000 Lossless or Lossy	1.2.840.10008.1.2 1.2.840.10008.1.2.1 1.2.840.10008.1.2.2 1.2.840.10008.1.2.4.50 1.2.840.10008.1.2.4.51  1.2.840.10008.1.2.4.57  1.2.840.10008.1.2.4.70   1.2.840.10008.1.2.4.80  1.2.840.10008.1.2.4.81  1.2.840.10008.1.2.5 1.2.840.10008.1.2.4.90 1.2.840.10008.1.2.4.91	SCP	None
Breast Tomosynthesis Image Storage	1.2.840.10009.0.1.4.1.1.13.1.3	Implicit VR Little Endian Explicit VR Little Endian Explicit VR Big Endian JPEG Baseline (Process 1) JPEG Extended (Process 2 & 4) JPEG Lossless, Non-Hierarchical (Process 14) JPEG Lossless, Non-Hierarchical, First-Order Prediction (Process 14 SV1) JPEG-LS Lossless Image Compression JPEG-LS Lossy (Near-Lossless) Image Compression RLE Lossless JPEG 2000 Lossless only JPEG 2000 Lossless or Lossy	1.2.840.10008.1.2 1.2.840.10008.1.2.1 1.2.840.10008.1.2.2 1.2.840.10008.1.2.4.50 1.2.840.10008.1.2.4.51  1.2.840.10008.1.2.4.57  1.2.840.10008.1.2.4.70   1.2.840.10008.1.2.4.80  1.2.840.10008.1.2.4.81  1.2.840.10008.1.2.5 1.2.840.10008.1.2.4.90 1.2.840.10008.1.2.4.91	SCP	None

Abstract Syntax		Transfer Syntax		Role	Ext. Neg
Name	UID	Name List	UID List		
Digital Intra-oral X-Ray Image Storage – For Presentation	1.2.840.10009.0.1.4.1.1.1.3	Implicit VR Little Endian Explicit VR Little Endian Explicit VR Big Endian JPEG Baseline (Process 1) JPEG Extended (Process 2 & 4) JPEG Lossless, Non-Hierarchical (Process 14) JPEG Lossless, Non-Hierarchical, First-Order Prediction (Process 14 SV1) JPEG-LS Lossless Image Compression JPEG-LS Lossy (Near-Lossless) Image Compression RLE Lossless JPEG 2000 Lossless only JPEG 2000 Lossless or Lossy	1.2.840.10008.1.2 1.2.840.10008.1.2.1 1.2.840.10008.1.2.2 1.2.840.10008.1.2.4.50 1.2.840.10008.1.2.4.51  1.2.840.10008.1.2.4.57  1.2.840.10008.1.2.4.70  1.2.840.10008.1.2.4.80  1.2.840.10008.1.2.4.81  1.2.840.10008.1.2.5 1.2.840.10008.1.2.4.90 1.2.840.10008.1.2.4.91	SCP	None
CT Image Storage	1.2.840.10009.0.1.4.1.1.2	Implicit VR Little Endian Explicit VR Little Endian Explicit VR Big Endian JPEG Baseline (Process 1) JPEG Extended (Process 2 & 4) JPEG Lossless, Non-Hierarchical (Process 14) JPEG Lossless, Non-Hierarchical, First-Order Prediction (Process 14 SV1) JPEG-LS Lossless Image Compression JPEG-LS Lossy (Near-Lossless) Image Compression RLE Lossless JPEG 2000 Lossless only JPEG 2000 Lossless or Lossy	1.2.840.10008.1.2 1.2.840.10008.1.2.1 1.2.840.10008.1.2.2 1.2.840.10008.1.2.4.50 1.2.840.10008.1.2.4.51  1.2.840.10008.1.2.4.57  1.2.840.10008.1.2.4.70  1.2.840.10008.1.2.4.80  1.2.840.10008.1.2.4.81  1.2.840.10008.1.2.5 1.2.840.10008.1.2.4.90 1.2.840.10008.1.2.4.91	SCP	None

Abstract Syntax		Transfer Syntax		Role	Ext. Neg
Name	UID	Name List	UID List		
Enhanced CT Image Storage	1.2.840.10009.0.1.4.1.1.2.1	Implicit VR Little Endian Explicit VR Little Endian Explicit VR Big Endian JPEG Baseline (Process 1) JPEG Extended (Process 2 & 4) JPEG Lossless, Non-Hierarchical (Process 14) JPEG Lossless, Non-Hierarchical, First-Order Prediction (Process 14 SV1) JPEG-LS Lossless Image Compression JPEG-LS Lossy (Near-Lossless) Image Compression RLE Lossless JPEG 2000 Lossless only JPEG 2000 Lossless or Lossy	1.2.840.10008.1.2 1.2.840.10008.1.2.1 1.2.840.10008.1.2.2 1.2.840.10008.1.2.4.50 1.2.840.10008.1.2.4.51  1.2.840.10008.1.2.4.57  1.2.840.10008.1.2.4.70  1.2.840.10008.1.2.4.80  1.2.840.10008.1.2.4.81  1.2.840.10008.1.2.5 1.2.840.10008.1.2.4.90 1.2.840.10008.1.2.4.91	SCP	None
Ultrasound Multi-frame Image Storage (Retired)	1.2.840.10009.0.1.4.1.1.3	Implicit VR Little Endian Explicit VR Little Endian Explicit VR Big Endian JPEG Baseline (Process 1) JPEG Extended (Process 2 & 4) JPEG Lossless, Non-Hierarchical (Process 14) JPEG Lossless, Non-Hierarchical, First-Order Prediction (Process 14 SV1) JPEG-LS Lossless Image Compression JPEG-LS Lossy (Near-Lossless) Image Compression RLE Lossless JPEG 2000 Lossless only JPEG 2000 Lossless or Lossy	1.2.840.10008.1.2 1.2.840.10008.1.2.1 1.2.840.10008.1.2.2 1.2.840.10008.1.2.4.50 1.2.840.10008.1.2.4.51  1.2.840.10008.1.2.4.57  1.2.840.10008.1.2.4.70  1.2.840.10008.1.2.4.80  1.2.840.10008.1.2.4.81  1.2.840.10008.1.2.5 1.2.840.10008.1.2.4.90 1.2.840.10008.1.2.4.91	SCP	None

Abstract Syntax		Transfer Syntax		Role	Ext. Neg
Name	UID	Name List	UID List		
Ultrasound Multi-frame Image Storage	1.2.840.10009.0.1.4.1.1.3.1	Implicit VR Little Endian Explicit VR Little Endian Explicit VR Big Endian JPEG Baseline (Process 1) JPEG Extended (Process 2 & 4) JPEG Lossless, Non-Hierarchical (Process 14) JPEG Lossless, Non-Hierarchical, First-Order Prediction (Process 14 SV1) JPEG-LS Lossless Image Compression JPEG-LS Lossy (Near-Lossless) Image Compression RLE Lossless JPEG 2000 Lossless only JPEG 2000 Lossless or Lossy	1.2.840.10008.1.2 1.2.840.10008.1.2.1 1.2.840.10008.1.2.2 1.2.840.10008.1.2.4.50 1.2.840.10008.1.2.4.51  1.2.840.10008.1.2.4.57  1.2.840.10008.1.2.4.70  1.2.840.10008.1.2.4.80  1.2.840.10008.1.2.4.81  1.2.840.10008.1.2.5 1.2.840.10008.1.2.4.90 1.2.840.10008.1.2.4.91	SCP	None
MR Image Storage	1.2.840.10009.0.1.4.1.1.4	Implicit VR Little Endian Explicit VR Little Endian Explicit VR Big Endian JPEG Baseline (Process 1) JPEG Extended (Process 2 & 4) JPEG Lossless, Non-Hierarchical (Process 14) JPEG Lossless, Non-Hierarchical, First-Order Prediction (Process 14 SV1) JPEG-LS Lossless Image Compression JPEG-LS Lossy (Near-Lossless) Image Compression RLE Lossless JPEG 2000 Lossless only JPEG 2000 Lossless or Lossy	1.2.840.10008.1.2 1.2.840.10008.1.2.1 1.2.840.10008.1.2.2 1.2.840.10008.1.2.4.50 1.2.840.10008.1.2.4.51  1.2.840.10008.1.2.4.57  1.2.840.10008.1.2.4.70  1.2.840.10008.1.2.4.80  1.2.840.10008.1.2.4.81  1.2.840.10008.1.2.5 1.2.840.10008.1.2.4.90 1.2.840.10008.1.2.4.91	SCP	None

Abstract Syntax		Transfer Syntax		Role	Ext. Neg
Name	UID	Name List	UID List		
Enhanced MR Image Storage	1.2.840.10009.0.1.4.1.1.4.1	Implicit VR Little Endian Explicit VR Little Endian Explicit VR Big Endian JPEG Baseline (Process 1) JPEG Extended (Process 2 & 4) JPEG Lossless, Non-Hierarchical (Process 14) JPEG Lossless, Non-Hierarchical, First-Order Prediction (Process 14 SV1) JPEG-LS Lossless Image Compression JPEG-LS Lossy (Near-Lossless) Image Compression RLE Lossless JPEG 2000 Lossless only JPEG 2000 Lossless or Lossy	1.2.840.10008.1.2 1.2.840.10008.1.2.1 1.2.840.10008.1.2.2 1.2.840.10008.1.2.4.50 1.2.840.10008.1.2.4.51  1.2.840.10008.1.2.4.57  1.2.840.10008.1.2.4.70  1.2.840.10008.1.2.4.80  1.2.840.10008.1.2.4.81  1.2.840.10008.1.2.5 1.2.840.10008.1.2.4.90 1.2.840.10008.1.2.4.91	SCP	None
Nuclear Medicine Image Storage (Retired)	1.2.840.10009.0.1.4.1.1.5	Implicit VR Little Endian Explicit VR Little Endian Explicit VR Big Endian JPEG Baseline (Process 1) JPEG Extended (Process 2 & 4) JPEG Lossless, Non-Hierarchical (Process 14) JPEG Lossless, Non-Hierarchical, First-Order Prediction (Process 14 SV1) JPEG-LS Lossless Image Compression JPEG-LS Lossy (Near-Lossless) Image Compression RLE Lossless JPEG 2000 Lossless only JPEG 2000 Lossless or Lossy	1.2.840.10008.1.2 1.2.840.10008.1.2.1 1.2.840.10008.1.2.2 1.2.840.10008.1.2.4.50 1.2.840.10008.1.2.4.51  1.2.840.10008.1.2.4.57  1.2.840.10008.1.2.4.70  1.2.840.10008.1.2.4.80  1.2.840.10008.1.2.4.81  1.2.840.10008.1.2.5 1.2.840.10008.1.2.4.90 1.2.840.10008.1.2.4.91	SCP	None



Abstract Syntax		Transfer Syntax		Role	Ext. Neg
Name	UID	Name List	UID List		
Ultrasound Image Storage (Retired)	1.2.840.10009.0.1.4.1.1.6	Implicit VR Little Endian Explicit VR Little Endian Explicit VR Big Endian JPEG Baseline (Process 1) JPEG Extended (Process 2 & 4) JPEG Lossless, Non-Hierarchical (Process 14) JPEG Lossless, Non-Hierarchical, First-Order Prediction (Process 14 SV1) JPEG-LS Lossless Image Compression JPEG-LS Lossy (Near-Lossless) Image Compression RLE Lossless JPEG 2000 Lossless only JPEG 2000 Lossless or Lossy	1.2.840.10008.1.2 1.2.840.10008.1.2.1 1.2.840.10008.1.2.2 1.2.840.10008.1.2.4.50 1.2.840.10008.1.2.4.51  1.2.840.10008.1.2.4.57  1.2.840.10008.1.2.4.70  1.2.840.10008.1.2.4.80  1.2.840.10008.1.2.4.81  1.2.840.10008.1.2.5 1.2.840.10008.1.2.4.90 1.2.840.10008.1.2.4.91	SCP	None
Ultrasound Image Storage	1.2.840.10009.0.1.4.1.1.6.1	Implicit VR Little Endian Explicit VR Little Endian Explicit VR Big Endian JPEG Baseline (Process 1) JPEG Extended (Process 2 & 4) JPEG Lossless, Non-Hierarchical (Process 14) JPEG Lossless, Non-Hierarchical, First-Order Prediction (Process 14 SV1) JPEG-LS Lossless Image Compression JPEG-LS Lossy (Near-Lossless) Image Compression RLE Lossless JPEG 2000 Lossless only JPEG 2000 Lossless or Lossy	1.2.840.10008.1.2 1.2.840.10008.1.2.1 1.2.840.10008.1.2.2 1.2.840.10008.1.2.4.50 1.2.840.10008.1.2.4.51  1.2.840.10008.1.2.4.57  1.2.840.10008.1.2.4.70  1.2.840.10008.1.2.4.80  1.2.840.10008.1.2.4.81  1.2.840.10008.1.2.5 1.2.840.10008.1.2.4.90 1.2.840.10008.1.2.4.91	SCP	None

Abstract Syntax		Transfer Syntax		Role	Ext. Neg
Name	UID	Name List	UID List		
Secondary Capture Image Storage	1.2.840.10009.0.1.4.1.1.7	Implicit VR Little Endian Explicit VR Little Endian Explicit VR Big Endian JPEG Baseline (Process 1) JPEG Extended (Process 2 & 4) JPEG Lossless, Non-Hierarchical (Process 14) JPEG Lossless, Non-Hierarchical, First-Order Prediction (Process 14 SV1) JPEG-LS Lossless Image Compression JPEG-LS Lossy (Near-Lossless) Image Compression RLE Lossless JPEG 2000 Lossless only JPEG 2000 Lossless or Lossy	1.2.840.10008.1.2 1.2.840.10008.1.2.1 1.2.840.10008.1.2.2 1.2.840.10008.1.2.4.50 1.2.840.10008.1.2.4.51  1.2.840.10008.1.2.4.57  1.2.840.10008.1.2.4.70   1.2.840.10008.1.2.4.80  1.2.840.10008.1.2.4.81  1.2.840.10008.1.2.5 1.2.840.10008.1.2.4.90 1.2.840.10008.1.2.4.91	SCP	None
Multi-frame Grayscale Byte Secondary Capture Image Storage	1.2.840.10009.0.1.4.1.1.7.2	Implicit VR Little Endian Explicit VR Little Endian Explicit VR Big Endian JPEG Baseline (Process 1) JPEG Extended (Process 2 & 4) JPEG Lossless, Non-Hierarchical (Process 14) JPEG Lossless, Non-Hierarchical, First-Order Prediction (Process 14 SV1) JPEG-LS Lossless Image Compression JPEG-LS Lossy (Near-Lossless) Image Compression RLE Lossless JPEG 2000 Lossless only JPEG 2000 Lossless or Lossy	1.2.840.10008.1.2 1.2.840.10008.1.2.1 1.2.840.10008.1.2.2 1.2.840.10008.1.2.4.50 1.2.840.10008.1.2.4.51  1.2.840.10008.1.2.4.57  1.2.840.10008.1.2.4.70   1.2.840.10008.1.2.4.80  1.2.840.10008.1.2.4.81  1.2.840.10008.1.2.5 1.2.840.10008.1.2.4.90 1.2.840.10008.1.2.4.91		

Abstract Syntax		Transfer Syntax		Role	Ext. Neg
Name	UID	Name List	UID List		
Multi-frame Grayscale Word Secondary Capture Image Store	1.2.840.10009.0.1.4.1.1.7.3	Implicit VR Little Endian Explicit VR Little Endian Explicit VR Big Endian JPEG Baseline (Process 1) JPEG Extended (Process 2 & 4) JPEG Lossless, Non-Hierarchical (Process 14) JPEG Lossless, Non-Hierarchical, First-Order Prediction (Process 14 SV1) JPEG-LS Lossless Image Compression JPEG-LS Lossy (Near-Lossless) Image Compression RLE Lossless JPEG 2000 Lossless only JPEG 2000 Lossless or Lossy	1.2.840.10008.1.2 1.2.840.10008.1.2.1 1.2.840.10008.1.2.2 1.2.840.10008.1.2.4.50 1.2.840.10008.1.2.4.51  1.2.840.10008.1.2.4.57  1.2.840.10008.1.2.4.70   1.2.840.10008.1.2.4.80  1.2.840.10008.1.2.4.81  1.2.840.10008.1.2.5 1.2.840.10008.1.2.4.90 1.2.840.10008.1.2.4.91		
Multi-frame True Color Secondary Capture Image Storage	1.2.840.10009.0.1.4.1.1.7.4	Implicit VR Little Endian Explicit VR Little Endian Explicit VR Big Endian JPEG Baseline (Process 1) JPEG Extended (Process 2 & 4) JPEG Lossless, Non-Hierarchical (Process 14) JPEG Lossless, Non-Hierarchical, First-Order Prediction (Process 14 SV1) JPEG-LS Lossless Image Compression JPEG-LS Lossy (Near-Lossless) Image Compression RLE Lossless JPEG 2000 Lossless only JPEG 2000 Lossless or Lossy	1.2.840.10008.1.2 1.2.840.10008.1.2.1 1.2.840.10008.1.2.2 1.2.840.10008.1.2.4.50 1.2.840.10008.1.2.4.51  1.2.840.10008.1.2.4.57  1.2.840.10008.1.2.4.70   1.2.840.10008.1.2.4.80  1.2.840.10008.1.2.4.81  1.2.840.10008.1.2.5 1.2.840.10008.1.2.4.90 1.2.840.10008.1.2.4.91		
Grayscale Softcopy Presentation State Storage SOP Class	1.2.840.10009.0.1.4.1.1.11.1	Implicit VR Little Endian Explicit VR Little Endian Explicit VR Big Endian	1.2.840.10008.1.2 1.2.840.10008.1.2.1 1.2.840.10008.1.2.2	SCP	None
Color Softcopy Presentation State Storage SOP Class	1.2.840.10009.0.1.4.1.1.11.2	Implicit VR Little Endian Explicit VR Little Endian Explicit VR Big Endian	1.2.840.10008.1.2 1.2.840.10008.1.2.1 1.2.840.10008.1.2.2	SCP	None
Pseudo-Color Softcopy Presentation State Storage SOP Class	1.2.840.10009.0.1.4.1.1.11.3	Implicit VR Little Endian Explicit VR Little Endian Explicit VR Big Endian	1.2.840.10008.1.2 1.2.840.10008.1.2.1 1.2.840.10008.1.2.2	SCP	None

Abstract Syntax		Transfer Syntax		Role	Ext. Neg
Name	UID	Name List	UID List		
Grayscale Planar MPR Volumetric Presentation State Storage	1.2.840.10009.0.1.4.1.1.11.6	Implicit VR Little Endian Explicit VR Little Endian Explicit VR Big Endian	1.2.840.10008.1.2 1.2.840.10008.1.2.1 1.2.840.10008.1.2.2	SCP	None
X-Ray Angiographic Image Storage	1.2.840.10009.0.1.4.1.1.12.1	Implicit VR Little Endian Explicit VR Little Endian Explicit VR Big Endian JPEG Baseline (Process 1) JPEG Extended (Process 2 & 4) JPEG Lossless, Non-Hierarchical (Process 14) JPEG Lossless, Non-Hierarchical, First-Order Prediction (Process 14 SV1) JPEG-LS Lossless Image Compression JPEG-LS Lossy (Near-Lossless) Image Compression RLE Lossless JPEG 2000 Lossless only JPEG 2000 Lossless or Lossy	1.2.840.10008.1.2 1.2.840.10008.1.2.1 1.2.840.10008.1.2.2 1.2.840.10008.1.2.4.50 1.2.840.10008.1.2.4.51  1.2.840.10008.1.2.4.57  1.2.840.10008.1.2.4.70  1.2.840.10008.1.2.4.80 1.2.840.10008.1.2.4.81  1.2.840.10008.1.2.5 1.2.840.10008.1.2.4.90 1.2.840.10008.1.2.4.91	SCP	None
Enhanced X-Ray Angiographic Image Storage	1.2.840.10009.0.1.4.1.1.12.1.1	Implicit VR Little Endian Explicit VR Little Endian Explicit VR Big Endian JPEG Baseline (Process 1) JPEG Extended (Process 2 & 4) JPEG Lossless, Non-Hierarchical (Process 14) JPEG Lossless, Non-Hierarchical, First-Order Prediction (Process 14 SV1) JPEG-LS Lossless Image Compression JPEG-LS Lossy (Near-Lossless) Image Compression RLE Lossless JPEG 2000 Lossless only JPEG 2000 Lossless or Lossy	1.2.840.10008.1.2 1.2.840.10008.1.2.1 1.2.840.10008.1.2.2 1.2.840.10008.1.2.4.50 1.2.840.10008.1.2.4.51  1.2.840.10008.1.2.4.57  1.2.840.10008.1.2.4.70  1.2.840.10008.1.2.4.80 1.2.840.10008.1.2.4.81  1.2.840.10008.1.2.5 1.2.840.10008.1.2.4.90 1.2.840.10008.1.2.4.91	SCP	None

Abstract Syntax		Transfer Syntax		Role	Ext. Neg
Name	UID	Name List	UID List		
X-Ray Radiofluoroscopic Image Storage	1.2.840.10009.0.1.4.1.1.12.2	Implicit VR Little Endian Explicit VR Little Endian Explicit VR Big Endian JPEG Baseline (Process 1) JPEG Extended (Process 2 & 4) JPEG Lossless, Non-Hierarchical (Process 14) JPEG Lossless, Non-Hierarchical, First-Order Prediction (Process 14 SV1) JPEG-LS Lossless Image Compression JPEG-LS Lossy (Near-Lossless) Image Compression RLE Lossless JPEG 2000 Lossless only JPEG 2000 Lossless or Lossy	1.2.840.10008.1.2 1.2.840.10008.1.2.1 1.2.840.10008.1.2.2 1.2.840.10008.1.2.4.50 1.2.840.10008.1.2.4.51  1.2.840.10008.1.2.4.57  1.2.840.10008.1.2.4.70  1.2.840.10008.1.2.4.80  1.2.840.10008.1.2.4.81  1.2.840.10008.1.2.5 1.2.840.10008.1.2.4.90 1.2.840.10008.1.2.4.91	SCP	None
Enhanced X-Ray Radiofluoroscopic Image Storage	1.2.840.10009.0.1.4.1.1.12.2.1	Implicit VR Little Endian Explicit VR Little Endian Explicit VR Big Endian JPEG Baseline (Process 1) JPEG Extended (Process 2 & 4) JPEG Lossless, Non-Hierarchical (Process 14) JPEG Lossless, Non-Hierarchical, First-Order Prediction (Process 14 SV1) JPEG-LS Lossless Image Compression JPEG-LS Lossy (Near-Lossless) Image Compression RLE Lossless JPEG 2000 Lossless only JPEG 2000 Lossless or Lossy	1.2.840.10008.1.2 1.2.840.10008.1.2.1 1.2.840.10008.1.2.2 1.2.840.10008.1.2.4.50 1.2.840.10008.1.2.4.51  1.2.840.10008.1.2.4.57  1.2.840.10008.1.2.4.70  1.2.840.10008.1.2.4.80  1.2.840.10008.1.2.4.81  1.2.840.10008.1.2.5 1.2.840.10008.1.2.4.90 1.2.840.10008.1.2.4.91	SCP	None

Abstract Syntax		Transfer Syntax		Role	Ext. Neg
Name	UID	Name List	UID List		
Nuclear Medicine Image Storage	1.2.840.10009.0.1.4.1.1.20	Implicit VR Little Endian Explicit VR Little Endian Explicit VR Big Endian JPEG Baseline (Process 1) JPEG Extended (Process 2 & 4) JPEG Lossless, Non-Hierarchical (Process 14) JPEG Lossless, Non-Hierarchical, First-Order Prediction (Process 14 SV1) JPEG-LS Lossless Image Compression JPEG-LS Lossy (Near-Lossless) Image Compression RLE Lossless JPEG 2000 Lossless only JPEG 2000 Lossless or Lossy	1.2.840.10008.1.2 1.2.840.10008.1.2.1 1.2.840.10008.1.2.2 1.2.840.10008.1.2.4.50 1.2.840.10008.1.2.4.51  1.2.840.10008.1.2.4.57  1.2.840.10008.1.2.4.70   1.2.840.10008.1.2.4.80  1.2.840.10008.1.2.4.81  1.2.840.10008.1.2.5 1.2.840.10008.1.2.4.90 1.2.840.10008.1.2.4.91	SCP	None
Spatial Fiducials Storage	1.2.840.10009.0.1.4.1.1.66.2	Implicit VR Little Endian Explicit VR Little Endian Explicit VR Big Endian	1.2.840.10008.1.2 1.2.840.10008.1.2.1 1.2.840.10008.1.2.2	SCP	None
VL Image Storage (retired)	1.2.840.10009.0.1.4.1.1.77.1	Implicit VR Little Endian Explicit VR Little Endian Explicit VR Big Endian JPEG Baseline (Process 1) JPEG Extended (Process 2 & 4) JPEG Lossless, Non-Hierarchical (Process 14) JPEG Lossless, Non-Hierarchical, First-Order Prediction (Process 14 SV1) JPEG-LS Lossless Image Compression JPEG-LS Lossy (Near-Lossless) Image Compression RLE Lossless JPEG 2000 Lossless only JPEG 2000 Lossless or Lossy	1.2.840.10008.1.2 1.2.840.10008.1.2.1 1.2.840.10008.1.2.2 1.2.840.10008.1.2.4.50 1.2.840.10008.1.2.4.51  1.2.840.10008.1.2.4.57  1.2.840.10008.1.2.4.70   1.2.840.10008.1.2.4.80  1.2.840.10008.1.2.4.81  1.2.840.10008.1.2.5 1.2.840.10008.1.2.4.90 1.2.840.10008.1.2.4.91	SCP	None

Abstract Syntax		Transfer Syntax		Role	Ext. Neg
Name	UID	Name List	UID List		
VL Endoscopic Image Storage	1.2.840.10009.0.1.4.1.1.77.1.1	Implicit VR Little Endian Explicit VR Little Endian Explicit VR Big Endian JPEG Baseline (Process 1) JPEG Extended (Process 2 & 4) JPEG Lossless, Non-Hierarchical (Process 14) JPEG Lossless, Non-Hierarchical, First-Order Prediction (Process 14 SV1) JPEG-LS Lossless Image Compression JPEG-LS Lossy (Near-Lossless) Image Compression RLE Lossless JPEG 2000 Lossless only JPEG 2000 Lossless or Lossy	1.2.840.10008.1.2 1.2.840.10008.1.2.1 1.2.840.10008.1.2.2 1.2.840.10008.1.2.4.50 1.2.840.10008.1.2.4.51  1.2.840.10008.1.2.4.57  1.2.840.10008.1.2.4.70  1.2.840.10008.1.2.4.80  1.2.840.10008.1.2.4.81  1.2.840.10008.1.2.5 1.2.840.10008.1.2.4.90 1.2.840.10008.1.2.4.91	SCP	None
Video Endoscopic Image Storage	1.2.840.10009.0.1.4.1.1.77.1.1.1	Implicit VR Little Endian Explicit VR Little Endian Explicit VR Big Endian JPEG Baseline (Process 1) JPEG Extended (Process 2 & 4) JPEG Lossless, Non-Hierarchical (Process 14) JPEG Lossless, Non-Hierarchical, First-Order Prediction (Process 14 SV1) JPEG-LS Lossless Image Compression JPEG-LS Lossy (Near-Lossless) Image Compression RLE Lossless JPEG 2000 Lossless only JPEG 2000 Lossless or Lossy	1.2.840.10008.1.2 1.2.840.10008.1.2.1 1.2.840.10008.1.2.2 1.2.840.10008.1.2.4.50 1.2.840.10008.1.2.4.51  1.2.840.10008.1.2.4.57  1.2.840.10008.1.2.4.70  1.2.840.10008.1.2.4.80  1.2.840.10008.1.2.4.81  1.2.840.10008.1.2.5 1.2.840.10008.1.2.4.90 1.2.840.10008.1.2.4.91	SCP	None

Abstract Syntax		Transfer Syntax		Role	Ext. Neg
Name	UID	Name List	UID List		
VL Microscopic Image Storage	1.2.840.10009.0.1.4.1.1.77.1.2	Implicit VR Little Endian Explicit VR Little Endian Explicit VR Big Endian JPEG Baseline (Process 1) JPEG Extended (Process 2 & 4) JPEG Lossless, Non-Hierarchical (Process 14) JPEG Lossless, Non-Hierarchical, First-Order Prediction (Process 14 SV1) JPEG-LS Lossless Image Compression JPEG-LS Lossy (Near-Lossless) Image Compression RLE Lossless JPEG 2000 Lossless only JPEG 2000 Lossless or Lossy	1.2.840.10008.1.2 1.2.840.10008.1.2.1 1.2.840.10008.1.2.2 1.2.840.10008.1.2.4.50 1.2.840.10008.1.2.4.51  1.2.840.10008.1.2.4.57  1.2.840.10008.1.2.4.70  1.2.840.10008.1.2.4.80  1.2.840.10008.1.2.4.81  1.2.840.10008.1.2.5 1.2.840.10008.1.2.4.90 1.2.840.10008.1.2.4.91	SCP	None
Video Microscopic Image Storage	1.2.840.10009.0.1.4.1.1.77.1.2.1	Implicit VR Little Endian Explicit VR Little Endian Explicit VR Big Endian JPEG Baseline (Process 1) JPEG Extended (Process 2 & 4) JPEG Lossless, Non-Hierarchical (Process 14) JPEG Lossless, Non-Hierarchical, First-Order Prediction (Process 14 SV1) JPEG-LS Lossless Image Compression JPEG-LS Lossy (Near-Lossless) Image Compression RLE Lossless JPEG 2000 Lossless only JPEG 2000 Lossless or Lossy	1.2.840.10008.1.2 1.2.840.10008.1.2.1 1.2.840.10008.1.2.2 1.2.840.10008.1.2.4.50 1.2.840.10008.1.2.4.51  1.2.840.10008.1.2.4.57  1.2.840.10008.1.2.4.70  1.2.840.10008.1.2.4.80  1.2.840.10008.1.2.4.81  1.2.840.10008.1.2.5 1.2.840.10008.1.2.4.90 1.2.840.10008.1.2.4.91	SCP	None



Abstract Syntax		Transfer Syntax		Role	Ext. Neg
Name	UID	Name List	UID List		
VL Slide-Coordinates Microscopic Image Storage	1.2.840.10009.0.1.4.1.1.77.1.3	Implicit VR Little Endian Explicit VR Little Endian Explicit VR Big Endian JPEG Baseline (Process 1) JPEG Extended (Process 2 & 4) JPEG Lossless, Non-Hierarchical (Process 14) JPEG Lossless, Non-Hierarchical, First-Order Prediction (Process 14 SV1) JPEG-LS Lossless Image Compression JPEG-LS Lossy (Near-Lossless) Image Compression RLE Lossless JPEG 2000 Lossless only JPEG 2000 Lossless or Lossy	1.2.840.10008.1.2 1.2.840.10008.1.2.1 1.2.840.10008.1.2.2 1.2.840.10008.1.2.4.50 1.2.840.10008.1.2.4.51  1.2.840.10008.1.2.4.57  1.2.840.10008.1.2.4.70  1.2.840.10008.1.2.4.80  1.2.840.10008.1.2.4.81  1.2.840.10008.1.2.5 1.2.840.10008.1.2.4.90 1.2.840.10008.1.2.4.91	SCP	None
VL Photographic Image Storage	1.2.840.10009.0.1.4.1.1.77.1.4	Implicit VR Little Endian Explicit VR Little Endian Explicit VR Big Endian JPEG Baseline (Process 1) JPEG Extended (Process 2 & 4) JPEG Lossless, Non-Hierarchical (Process 14) JPEG Lossless, Non-Hierarchical, First-Order Prediction (Process 14 SV1) JPEG-LS Lossless Image Compression JPEG-LS Lossy (Near-Lossless) Image Compression RLE Lossless JPEG 2000 Lossless only JPEG 2000 Lossless or Lossy	1.2.840.10008.1.2 1.2.840.10008.1.2.1 1.2.840.10008.1.2.2 1.2.840.10008.1.2.4.50 1.2.840.10008.1.2.4.51  1.2.840.10008.1.2.4.57  1.2.840.10008.1.2.4.70  1.2.840.10008.1.2.4.80  1.2.840.10008.1.2.4.81  1.2.840.10008.1.2.5 1.2.840.10008.1.2.4.90 1.2.840.10008.1.2.4.91	SCP	None

Abstract Syntax		Transfer Syntax		Role	Ext. Neg
Name	UID	Name List	UID List		
Video Photographic Image Storage	1.2.840.10009.0.1.4.1.1.77.1.4.1	Implicit VR Little Endian Explicit VR Little Endian Explicit VR Big Endian JPEG Baseline (Process 1) JPEG Extended (Process 2 & 4) JPEG Lossless, Non-Hierarchical (Process 14) JPEG Lossless, Non-Hierarchical, First-Order Prediction (Process 14 SV1) JPEG-LS Lossless Image Compression JPEG-LS Lossy (Near-Lossless) Image Compression RLE Lossless JPEG 2000 Lossless only JPEG 2000 Lossless or Lossy	1.2.840.10008.1.2 1.2.840.10008.1.2.1 1.2.840.10008.1.2.2 1.2.840.10008.1.2.4.50 1.2.840.10008.1.2.4.51  1.2.840.10008.1.2.4.57  1.2.840.10008.1.2.4.70  1.2.840.10008.1.2.4.80  1.2.840.10008.1.2.4.81  1.2.840.10008.1.2.5 1.2.840.10008.1.2.4.90 1.2.840.10008.1.2.4.91	SCP	None
Ophthalmic Photographic 8 Bit Image Storage	1.2.840.10009.0.1.4.1.1.77.1.5.1	Implicit VR Little Endian Explicit VR Little Endian Explicit VR Big Endian JPEG Baseline (Process 1) JPEG Extended (Process 2 & 4) JPEG Lossless, Non-Hierarchical (Process 14) JPEG Lossless, Non-Hierarchical, First-Order Prediction (Process 14 SV1) JPEG-LS Lossless Image Compression JPEG-LS Lossy (Near-Lossless) Image Compression RLE Lossless JPEG 2000 Lossless only JPEG 2000 Lossless or Lossy	1.2.840.10008.1.2 1.2.840.10008.1.2.1 1.2.840.10008.1.2.2 1.2.840.10008.1.2.4.50 1.2.840.10008.1.2.4.51  1.2.840.10008.1.2.4.57  1.2.840.10008.1.2.4.70  1.2.840.10008.1.2.4.80  1.2.840.10008.1.2.4.81  1.2.840.10008.1.2.5 1.2.840.10008.1.2.4.90 1.2.840.10008.1.2.4.91	SCP	None

Abstract Syntax		Transfer Syntax		Role	Ext. Neg
Name	UID	Name List	UID List		
Ophthalmic Photographic 16 Bit Image Storage	1.2.840.10009.0.1.4.1.1.77.1.5.2	Implicit VR Little Endian Explicit VR Little Endian Explicit VR Big Endian JPEG Baseline (Process 1) JPEG Extended (Process 2 & 4) JPEG Lossless, Non-Hierarchical (Process 14) JPEG Lossless, Non-Hierarchical, First-Order Prediction (Process 14 SV1) JPEG-LS Lossless Image Compression JPEG-LS Lossy (Near-Lossless) Image Compression RLE Lossless JPEG 2000 Lossless only JPEG 2000 Lossless or Lossy	1.2.840.10008.1.2 1.2.840.10008.1.2.1 1.2.840.10008.1.2.2 1.2.840.10008.1.2.4.50 1.2.840.10008.1.2.4.51  1.2.840.10008.1.2.4.57  1.2.840.10008.1.2.4.70   1.2.840.10008.1.2.4.80 1.2.840.10008.1.2.4.81  1.2.840.10008.1.2.5 1.2.840.10008.1.2.4.90 1.2.840.10008.1.2.4.91	SCP	None
Basic Text SR	1.2.840.10009.0.1.4.1.1.88.11	Implicit VR Little Endian Explicit VR Little Endian Explicit VR Big Endian	1.2.840.10008.1.2 1.2.840.10008.1.2.1 1.2.840.10008.1.2.2	SCP	None
Enhanced SR	1.2.840.10009.0.1.4.1.1.88.22	Implicit VR Little Endian Explicit VR Little Endian Explicit VR Big Endian	1.2.840.10008.1.2 1.2.840.10008.1.2.1 1.2.840.10008.1.2.2	SCP	None
Comprehensive SR	1.2.840.10009.0.1.4.1.1.88.33	Implicit VR Little Endian Explicit VR Little Endian Explicit VR Big Endian	1.2.840.10008.1.2 1.2.840.10008.1.2.1 1.2.840.10008.1.2.2	SCP	None
Mammography CAD SR	1.2.840.10009.0.1.4.1.1.89.00	Implicit VR Little Endian Explicit VR Little Endian Explicit VR Big Endian	1.2.840.10008.1.2 1.2.840.10008.1.2.1 1.2.840.10008.1.2.2	SCP	None
Key Object Selection Document	1.2.840.10009.0.1.4.1.1.89.09	Implicit VR Little Endian Explicit VR Little Endian Explicit VR Big Endian	1.2.840.10008.1.2 1.2.840.10008.1.2.1 1.2.840.10008.1.2.2	SCP	None
Encapsulated PDF Storage	1.2.840.10009.0.1.4.1.1.104.1	Implicit VR Little Endian Explicit VR Little Endian Explicit VR Big Endian	1.2.840.10008.1.2 1.2.840.10008.1.2.1 1.2.840.10008.1.2.2	SCP	None

Abstract Syntax		Transfer Syntax		Role	Ext. Neg
Name	UID	Name List	UID List		
Positron Emission Tomography Image Storage	1.2.840.10009.0.1.4.1.1.128	Implicit VR Little Endian Explicit VR Little Endian Explicit VR Big Endian JPEG Baseline (Process 1) JPEG Extended (Process 2 & 4) JPEG Lossless, Non-Hierarchical (Process 14) JPEG Lossless, Non-Hierarchical, First-Order Prediction (Process 14 SV1) JPEG-LS Lossless Image Compression JPEG-LS Lossy (Near-Lossless) Image Compression RLE Lossless JPEG 2000 Lossless only JPEG 2000 Lossless or Lossy	1.2.840.10008.1.2 1.2.840.10008.1.2.1 1.2.840.10008.1.2.2 1.2.840.10008.1.2.4.50 1.2.840.10008.1.2.4.51  1.2.840.10008.1.2.4.57  1.2.840.10008.1.2.4.70   1.2.840.10008.1.2.4.80  1.2.840.10008.1.2.4.81  1.2.840.10008.1.2.5 1.2.840.10008.1.2.4.90 1.2.840.10008.1.2.4.91	SCP	None
MI 3D Softcopy Presentation State	1.3.6.1.4.1.16978.3.1	Implicit VR Little Endian Explicit VR Little Endian Explicit VR Big Endian	1.2.840.10008.1.2 1.2.840.10008.1.2.1 1.2.840.10008.1.2.2	SCP	None
Fuji CR	1.2.392.200036.9125.1.1.2	Implicit VR Little Endian Explicit VR Little Endian Explicit VR Big Endian JPEG Baseline (Process 1) JPEG Extended (Process 2 & 4) JPEG Lossless, Non-Hierarchical (Process 14) JPEG Lossless, Non-Hierarchical, First-Order Prediction (Process 14 SV1) JPEG-LS Lossless Image Compression JPEG-LS Lossy (Near-Lossless) Image Compression RLE Lossless JPEG 2000 Lossless only JPEG 2000 Lossless or Lossy	1.2.840.10008.1.2 1.2.840.10008.1.2.1 1.2.840.10008.1.2.2 1.2.840.10008.1.2.4.50 1.2.840.10008.1.2.4.51  1.2.840.10008.1.2.4.57  1.2.840.10008.1.2.4.70   1.2.840.10008.1.2.4.80  1.2.840.10008.1.2.4.81  1.2.840.10008.1.2.5 1.2.840.10008.1.2.4.90 1.2.840.10008.1.2.4.91	SCP	None
Encapsulated STL	1.2.840.10009.0.1.4.1.1.104.3	Implicit VR Little Endian Explicit VR Little Endian Explicit VR Big Endian	1.2.840.10008.1.2 1.2.840.10008.1.2.1 1.2.840.10008.1.2.2	SCP	None

**Table 22: Storage SCP: Accepted Presentation Contexts for the Receive Instances activity.**

Extended Negotiation

No extended negotiation is performed.

## 4.2.4 AE Specification: Print Management SCU

### SOP Classes

The Print Management SCU provides Standard Conformance to SOP Classes listed in Table 23.

SOP Class Name	SOP Class UID	SCU	SCP
<i>Print Management</i>			
Basic Grayscale Print Management Meta SOP Class	1.2.840.10009.0.1.1.9	Yes	No
Basic Annotation Box SOP Class	1.2.840.10009.0.1.1.15	Yes	No
Presentation LUT SOP Class	1.2.840.10009.0.1.1.23	Yes	No

**Table 23: Print Management SCU: Supported SOP Classes.**

### Association Policies

#### General

The Print Management SCU will propose Association Requests for DICOM Print Management Services. The DICOM standard application context name for DICOM 3.0 is always proposed, see Table 24.

Application Context Name	1.2.840.10008.3.1.1.1
--------------------------	-----------------------

**Table 24: Print Management SCU: DICOM Application Context.**

#### Number of Associations

The Print Management SCU does not support multiple simultaneous associations, see Table 25.

Maximum number of simultaneous associations	1 – Configurable.
---	-------------------

**Table 25: Print Management SCU: Number of simultaneous associations.**

#### Asynchronous Nature

The Print Management SCU does not support asynchronous communication. Multiple outstanding transactions are not supported.

Maximum number of outstanding asynchronous transactions	1 – Configurable.
---	-------------------

**Table 26: Print Management SCU: Asynchronous nature.**

#### Implementation Identifying Information

The identifying information for the Print Management SCU can be seen in Table 27.

Implementation Class UID	1.3.6.1.4.1.16978.0.3.5.4.31
--------------------------	------------------------------

Implementation Version Name	EV-3.5.4-31
-----------------------------	-------------

**Table 27: Print Management SCU: DICOM Implementation Class and Version.**

## Association Initiation Policy

Activity: Print Images

Description and Sequencing of Activities

The Print Management SCU sends an Association Request to a remote DICOM Application Entity acting as Basic Grayscale Print Management Meta SOP Class SCP when the user prints DICOM Instances from the Vitrea Read General 2D CAM.

Proposed Presentation Contexts

The Print Management SCU will propose Presentation Contexts as listed in Table 28 for the Print Images activity.

Abstract Syntax		Transfer Syntax		Role	Ext. Neg
Name	UID	Name List	UID List		
Basic Grayscale Print Management Meta SOP Class	1.2.840.10009.0.1.1.9	Implicit VR Little Endian Explicit VR Little Endian Explicit VR Big Endian	1.2.840.10008.1.2 1.2.840.10008.1.2.1 1.2.840.10008.1.2.2	SCU	None
Basic Annotation Box SOP Class	1.2.840.10009.0.1.1.15	Implicit VR Little Endian Explicit VR Little Endian Explicit VR Big Endian	1.2.840.10008.1.2 1.2.840.10008.1.2.1 1.2.840.10008.1.2.2	SCU	None
Presentation LUT SOP Class	1.2.840.10009.0.1.1.23	Implicit VR Little Endian Explicit VR Little Endian Explicit VR Big Endian	1.2.840.10008.1.2 1.2.840.10008.1.2.1 1.2.840.10008.1.2.2	SCU	None

**Table 28: Print Management SCU: Proposed Presentation Contexts for the Print Images activity.**

## Association Acceptance Policy

The Print Management SCU does not accept Association Requests.

## 4.3 Network Interfaces

### 4.3.1 Physical Network Interface

The Vitrea Read Image Display Application Entities are indifferent to the physical medium over which TCP/IP is executed. This is entirely dependent on the underlying operating system and hardware.

### 4.3.2 Additional Protocols

When hostnames rather than IP addresses are used to specify presentation addresses for remote Application Entities, the Vitrea Read Image Display Application Entities depends on the name resolution mechanism of the underlying operating system for proper operation.

## 4.4 Configuration

### 4.4.1 AE Title/Presentation Address Mapping

#### Local AE Titles

The default Application Entity title and port number of the Vitrea Read Image Display Application Entities are listed in Table 29.

The default AE Title for the Storage SCP is created from the hostname and port number of the host where the Storage SCP is installed.

Application Entity	Default AE Title	Default Port Number
Query/Retrieve SCU	ID_QR_SCU	N/A
Storage SCU	ID_STORE_SCU	N/A
Storage SCP	<hostname>-<port nr>	7000
Print Management SCU	ID_PM_SCU	N/A

**Table 29: Local AE Titles.**

#### Remote AE Title/Presentation Address Mapping

##### Remote Query/Retrieve SCP and Storage SCP

The remote Query/Retrieve SCP and Storage SCP configuration is stored in the environment variable EV\_PACS. The Vitrea Read Image Display assumes that the Query/Retrieve SCP and Storage SCP are located on the same host.

The EV\_PACS environment variable has the following structure:

hostname=<hostname>,port=<port number>,qr\_aet=<aet>,store\_aet=<aet>

##### Remote Print Management SCP

The Print Management SCP configuration is stored in a printer profile in the internal database. For more information on how to setup a printer, see Color Softcopy Presentation State Storage SOP Class

### 4.4.2 Parameters

The configurable parameters of Vitrea Read Image Display are listed in Table 30.

Parameter	Configurable	Default Value
<i>General Parameters</i>		
PDU Size	No	32Kb

Parameter	Configurable	Default Value
Time-out waiting for acceptance or rejection Response of an Association Open Request (Application level timeout)	No	None
General DIMSE level time-out values	No	None
Time-out waiting for response to TCP/IP connect request (Low-level timeout)	Yes	180s [OS Specific]
Time-out waiting for acceptance of a TCP/IP message over the network (Low-level timeout)	Yes	180s [OS Specific]
Time-out waiting for data between TCP/IP packets (Low-level timeout)	Yes	Adaptive 0.2-120s [OS Specific]
Any changes to default TCP/IP setting such as configurable stack parameters	No	None
<i>AE Specific Parameters</i>		
Size constraint in maximum object size	No	None
Maximum PDU Size that the AE can receive	No	32Kb
Maximum PDU Size that the AE can send	No	32Kb
AE specific DIMSE level time-out values	No	None
SOP Class Support	No	All supported SOP Classes always proposed and accepted
Transfer Syntax Support	No	All supported Transfer Syntaxes always proposed and accepted

**Table 30: Configurable Parameters.**



## 5 Media Interchange

### 5.1 Implementation Model

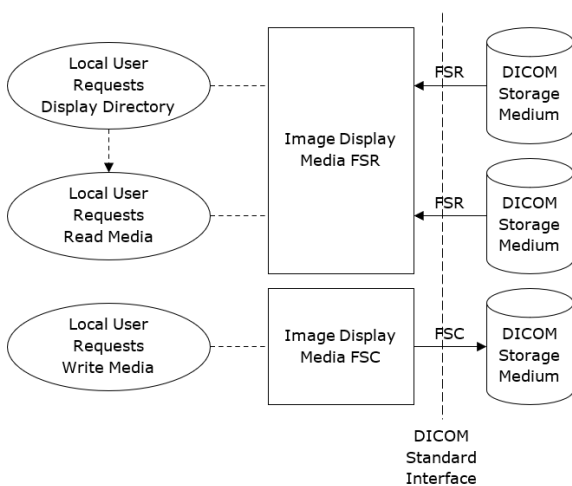
The Vitrea Read Image Display DICOM Media Interchange Services are implemented in two logical Application Entities: the Media FSR Application Entity, and the Media FSC Application Entity.

The Media FSR Application Entity is a logical Application Entity implemented in the Vitrea Read Workflow Manager. The Media FSR Application Entity, launched at user login, provides DICOM Media Interchange Services to read DICOM Instances from a DICOM Storage Medium such as CD-ROM or DVD.

The Media FSC Application Entity is a logical Application Entity implemented in the Vitrea Read Workflow Manager. The Media FSC Application Entity provides DICOM Media Interchange Service to write DICOM Instances to a DICOM Storage Medium.

#### 5.1.1 Application Data Flow Diagram

Application data flow diagram for the DICOM Media Interchange Services of the Vitrea Read Image Display can be seen in Figure 6.



**Figure 6: Application Data Flow Diagram.**

#### 5.1.2 Functional Definitions of AE's

##### Functional Definition: Media FSR

The Media FSR Application Entity provides DICOM Services to read DICOM files from a DICOM Storage Medium.

The Media FSR Application Entity Provides DICOM Services to:

- Read DICOM Instances from a DICOM Storage Medium using the DICOM Interchange option of the Media Storage SOP Class (Acting as FSR).

##### Functional Definition: Media FSC

- The Media FSC Application Entity provides DICOM Services to write DICOM files to a DICOM Storage Medium.

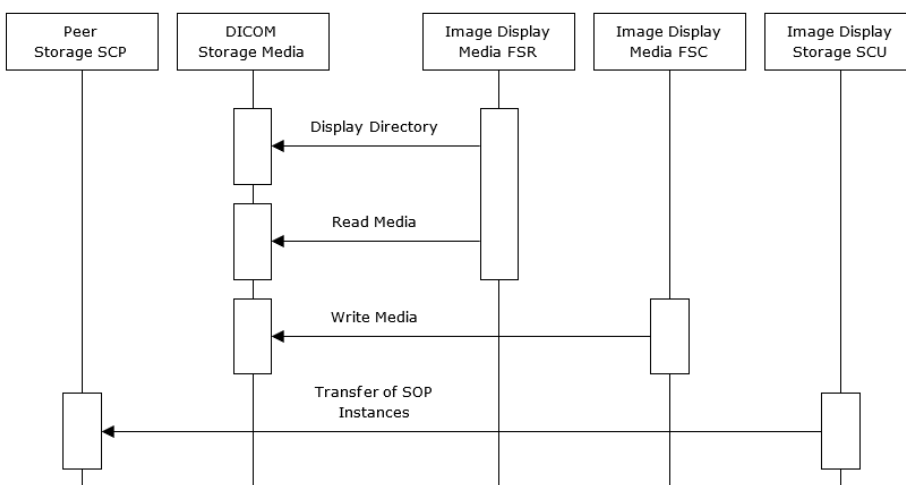
The Media FSC Application Entity Provides DICOM Services to:

- Write DICOM Instances to a DICOM Storage Medium using the DICOM Interchange option of the Media Storage SOP Class (Acting as FSC).

### 5.1.3 Sequencing of Real World Activities

The sequencing of the DICOM Media Interchange activities for the Vitrea Read Image Display Application Entities can be seen in Figure 7.

The DICOM Network Application Entity, Storage SCU, has been included in the sequence diagram to illustrate that the Media FSR Application Entity must execute the Display Directory activity before the Storage SCU may initiate a Transfer of SOP Instances activity.



**Figure 7: Sequencing of Real World Activities.**

### 5.1.4 File Meta Information for Implementation Class and Version

The File Meta Information for the Implementation Class and Version is listed in Table 31.

Implementation Class UID	1.3.6.1.4.1.16978.0.3.5.4.31
Implementation Version Name	EV-3.5.4-31

**Table 31: File Meta Information for Implementation Class and Version.**

## 5.2 AE Specifications

### 5.2.1 AE Specification: Media FSR

The related application profiles, real world activities, and roles for the Media FSR Application Entity are listed in Table 32.

Supported Application Profile	Real World Activity	Roles	SC Option
-------------------------------	---------------------	-------	-----------

General Purpose CD-R Interchange	Display Directory	FSR	Interchange
	Read Media	FSR	Interchange
General Purpose Interchange on DVD-RAM Media	Display Directory	FSR	Interchange
	Read Media	FSR	Interchange

**Table 32: Media FSR: Related Application Profiles, Real World Activities, and Roles.**

### File Meta Information: Media FSR

The Media FSR Application Entity creates no File Meta Information.

### Real-World Activities

Activity: Display Directory

#### Description and Sequencing of Activities

The local user at the Image Display inserts a CD-R/RW, a DVD-R/RW, a DVD+R/RW, or a DVD-RAM media into the media device, and invokes "Open CD-ROM/DVD" from the Vitrea Read Workflow Manager. The Media FSR Application Entity will then read the media directory, and display a list of stored DICOM Instances in the Workflow Manager.

#### Media Storage Application Profile

The Media Storage Application Profile for the Display Directory activity supports the Abstract Syntaxes and Transfer Syntaxes listed in Table 33.

Abstract Syntax		Transfer Syntax		Role	Ext. Neg
Name	UID	Name List	UID List		
Basic Directory	1.2.840.10008.1.3.10	Implicit VR Little Endian Explicit VR Little Endian Explicit VR Big Endian	1.2.840.10008.1.2 1.2.840.10008.1.2.1 1.2.840.10008.1.2.2	FSR	Interchange
Computed Radiography Image Storage	1.2.840.10009.0.1.4.1.1.1	Implicit VR Little Endian Explicit VR Little Endian Explicit VR Big Endian	1.2.840.10008.1.2 1.2.840.10008.1.2.1 1.2.840.10008.1.2.2	FSR	Interchange
CT Image Storage	1.2.840.10009.0.1.4.1.1.2	Implicit VR Little Endian Explicit VR Little Endian Explicit VR Big Endian	1.2.840.10008.1.2 1.2.840.10008.1.2.1 1.2.840.10008.1.2.2	FSR	Interchange

Digital Mammography X-Ray Image Storage – For Presentation	1.2.840.10009.0.1.4.1.1.1.2	Implicit VR Little Endian Explicit VR Little Endian Explicit VR Big Endian	1.2.840.10008.1.2 1.2.840.10008.1.2.1 1.2.840.10008.1.2.2	FSR	Interchange
Digital Mammography X-Ray Image Storage – For Processing	1.2.840.10009.0.1.4.1.1.1.2.1	Implicit VR Little Endian Explicit VR Little Endian Explicit VR Big Endian	1.2.840.10008.1.2 1.2.840.10008.1.2.1 1.2.840.10008.1.2.2	FSR	Interchange
Breast Tomosynthesis Image Storage	1.2.840.10009.0.1.4.1.1.13.1.3	Implicit VR Little Endian Explicit VR Little Endian Explicit VR Big Endian	1.2.840.10008.1.2 1.2.840.10008.1.2.1 1.2.840.10008.1.2.2	FSR	Interchange
Digital X-Ray Image Storage – For Presentation	1.2.840.10009.0.1.4.1.1.1.1	Implicit VR Little Endian Explicit VR Little Endian Explicit VR Big Endian	1.2.840.10008.1.2 1.2.840.10008.1.2.1 1.2.840.10008.1.2.2	FSR	Interchange
Digital X-Ray Image Storage – For Processing	1.2.840.10009.0.1.4.1.1.1.1.1	Implicit VR Little Endian Explicit VR Little Endian Explicit VR Big Endian	1.2.840.10008.1.2 1.2.840.10008.1.2.1 1.2.840.10008.1.2.2	FSR	Interchange
MR Image Storage	1.2.840.10009.0.1.4.1.1.4	Implicit VR Little Endian Explicit VR Little Endian Explicit VR Big Endian	1.2.840.10008.1.2 1.2.840.10008.1.2.1 1.2.840.10008.1.2.2	FSR	Interchange
Secondary Capture Image Storage	1.2.840.10009.0.1.4.1.1.7	Implicit VR Little Endian Explicit VR Little Endian Explicit VR Big Endian	1.2.840.10008.1.2 1.2.840.10008.1.2.1 1.2.840.10008.1.2.2	FSR	Interchange
Ultrasound Image Storage	1.2.840.10009.0.1.4.1.1.6.1	Implicit VR Little Endian Explicit VR Little Endian Explicit VR Big Endian	1.2.840.10008.1.2 1.2.840.10008.1.2.1 1.2.840.10008.1.2.2	FSR	Interchange

Ultrasound Image Storage (Retired)	1.2.840.10009.0.1.4.1.1.6	Implicit VR Little Endian Explicit VR Little Endian Explicit VR Big Endian	1.2.840.10008.1.2 1.2.840.10008.1.2.1 1.2.840.10008.1.2.2	FSR	Interchange
X-Ray Angiographic Image Storage	1.2.840.10009.0.1.4.1.1.12.1	Implicit VR Little Endian Explicit VR Little Endian Explicit VR Big Endian	1.2.840.10008.1.2 1.2.840.10008.1.2.1 1.2.840.10008.1.2.2	FSR	Interchange
X-Ray Radiofluoroscopic Image Storage	1.2.840.10009.0.1.4.1.1.12.2	Implicit VR Little Endian Explicit VR Little Endian Explicit VR Big Endian	1.2.840.10008.1.2 1.2.840.10008.1.2.1 1.2.840.10008.1.2.2	FSR	Interchange
Basic Text SR	1.2.840.10009.0.1.4.1.1.88.11	Implicit VR Little Endian Explicit VR Little Endian Explicit VR Big Endian	1.2.840.10008.1.2 1.2.840.10008.1.2.1 1.2.840.10008.1.2.2	FSR	Interchange
Blending Softcopy Presentation State	1.2.840.10009.0.1.4.1.1.11.4	Implicit VR Little Endian Explicit VR Little Endian Explicit VR Big Endian	1.2.840.10008.1.2 1.2.840.10008.1.2.1 1.2.840.10008.1.2.2	FSR	Interchange
Color Softcopy Presentation State	1.2.840.10009.0.1.4.1.1.11.2	Implicit VR Little Endian Explicit VR Little Endian Explicit VR Big Endian	1.2.840.10008.1.2 1.2.840.10008.1.2.1 1.2.840.10008.1.2.2	FSR	Interchange
Pseudo Color Softcopy Presentation State	1.2.840.10009.0.1.4.1.1.11.3	Implicit VR Little Endian Explicit VR Little Endian Explicit VR Big Endian	1.2.840.10008.1.2 1.2.840.10008.1.2.1 1.2.840.10008.1.2.2	FSR	Interchange
Grayscale Planar MPR Volumetric Presentation State Storage	1.2.840.10009.0.1.4.1.1.11.6	Implicit VR Little Endian Explicit VR Little Endian Explicit VR Big Endian	1.2.840.10008.1.2 1.2.840.10008.1.2.1 1.2.840.10008.1.2.2	FSR	Interchange

Comprehensive SR	1.2.840.10009.0.1.4.1.1.88.33	Implicit VR Little Endian Explicit VR Little Endian Explicit VR Big Endian	1.2.840.10008.1.2 1.2.840.10008.1.2.1 1.2.840.10008.1.2.2	FSR	Interchange
Digital Intra Oral X-Ray Image – For Presentation	1.2.840.10009.0.1.4.1.1.1.3	Implicit VR Little Endian Explicit VR Little Endian Explicit VR Big Endian	1.2.840.10008.1.2 1.2.840.10008.1.2.1 1.2.840.10008.1.2.2	FSR	Interchange
Digital Mammography X-Ray Image – For Processing	1.2.840.10009.0.1.4.1.1.1.2.1	Implicit VR Little Endian Explicit VR Little Endian Explicit VR Big Endian	1.2.840.10008.1.2 1.2.840.10008.1.2.1 1.2.840.10008.1.2.2	FSR	Interchange
Encapsulated PDF	1.2.840.10009.0.1.4.1.1.104.1	Implicit VR Little Endian Explicit VR Little Endian Explicit VR Big Endian	1.2.840.10008.1.2 1.2.840.10008.1.2.1 1.2.840.10008.1.2.2	FSR	Interchange
Enhanced CT Image	1.2.840.10009.0.1.4.1.1.2.1	Implicit VR Little Endian Explicit VR Little Endian Explicit VR Big Endian	1.2.840.10008.1.2 1.2.840.10008.1.2.1 1.2.840.10008.1.2.2	FSR	Interchange
Enhanced MR Image	1.2.840.10009.0.1.4.1.1.4.1	Implicit VR Little Endian Explicit VR Little Endian Explicit VR Big Endian	1.2.840.10008.1.2 1.2.840.10008.1.2.1 1.2.840.10008.1.2.2	FSR	Interchange
Enhanced SR	1.2.840.10009.0.1.4.1.1.88.22	Implicit VR Little Endian Explicit VR Little Endian Explicit VR Big Endian	1.2.840.10008.1.2 1.2.840.10008.1.2.1 1.2.840.10008.1.2.2	FSR	Interchange
Enhanced XA Image	1.2.840.10009.0.1.4.1.1.12.1.1	Implicit VR Little Endian Explicit VR Little Endian Explicit VR Big Endian	1.2.840.10008.1.2 1.2.840.10008.1.2.1 1.2.840.10008.1.2.2	FSR	Interchange

Enhanced XRF Image	1.2.840.10009.0.1.4.1.1.12.2.1	Implicit VR Little Endian Explicit VR Little Endian Explicit VR Big Endian	1.2.840.10008.1.2 1.2.840.10008.1.2.1 1.2.840.10008.1.2.2	FSR	Interchange
Grayscale Softcopy Presentation State	1.2.840.10009.0.1.4.1.1.11.1	Implicit VR Little Endian Explicit VR Little Endian Explicit VR Big Endian	1.2.840.10008.1.2 1.2.840.10008.1.2.1 1.2.840.10008.1.2.2	FSR	Interchange
Key Object Selection Document	1.2.840.10009.0.1.4.1.1.89.09	Implicit VR Little Endian Explicit VR Little Endian Explicit VR Big Endian	1.2.840.10008.1.2 1.2.840.10008.1.2.1 1.2.840.10008.1.2.2	FSR	Interchange
Mammography CAD SR	1.2.840.10009.0.1.4.1.1.89.00	Implicit VR Little Endian Explicit VR Little Endian Explicit VR Big Endian	1.2.840.10008.1.2 1.2.840.10008.1.2.1 1.2.840.10008.1.2.2	FSR	Interchange
Multiframe Grayscale Byte Secondary Capture Image	1.2.840.10009.0.1.4.1.1.7.2	Implicit VR Little Endian Explicit VR Little Endian Explicit VR Big Endian	1.2.840.10008.1.2 1.2.840.10008.1.2.1 1.2.840.10008.1.2.2	FSR	Interchange
Multiframe Grayscale Word Secondary Capture Image	1.2.840.10009.0.1.4.1.1.7.3	Implicit VR Little Endian Explicit VR Little Endian Explicit VR Big Endian	1.2.840.10008.1.2 1.2.840.10008.1.2.1 1.2.840.10008.1.2.2	FSR	Interchange
Multiframe True Color Secondary Capture Image	1.2.840.10009.0.1.4.1.1.7.4	Implicit VR Little Endian Explicit VR Little Endian Explicit VR Big Endian	1.2.840.10008.1.2 1.2.840.10008.1.2.1 1.2.840.10008.1.2.2	FSR	Interchange
NuclearMedicineImage (retired)	1.2.840.10009.0.1.4.1.1.5	Implicit VR Little Endian Explicit VR Little Endian Explicit VR Big Endian	1.2.840.10008.1.2 1.2.840.10008.1.2.1 1.2.840.10008.1.2.2	FSR	Interchange

NuclearMedicineImage	1.2.840.10009.0.1.4.1.1.20	Implicit VR Little Endian Explicit VR Little Endian Explicit VR Big Endian	1.2.840.10008.1.2 1.2.840.10008.1.2.1 1.2.840.10008.1.2.2	FSR	Interchange
Ophthalmic Photography 16-Bit Image	1.2.840.10009.0.1.4.1.1.77.1.5.2	Implicit VR Little Endian Explicit VR Little Endian Explicit VR Big Endian	1.2.840.10008.1.2 1.2.840.10008.1.2.1 1.2.840.10008.1.2.2	FSR	Interchange
Ophthalmic Photography 8-Bit Image	1.2.840.10009.0.1.4.1.1.77.1.5.1	Implicit VR Little Endian Explicit VR Little Endian Explicit VR Big Endian	1.2.840.10008.1.2 1.2.840.10008.1.2.1 1.2.840.10008.1.2.2	FSR	Interchange
Positron E mission Tomography Image	1.2.840.10009.0.1.4.1.1.128	Implicit VR Little Endian Explicit VR Little Endian Explicit VR Big Endian	1.2.840.10008.1.2 1.2.840.10008.1.2.1 1.2.840.10008.1.2.2	FSR	Interchange
Pseudo Color Softcopy Presentation State	1.2.840.10009.0.1.4.1.1.11.3	Implicit VR Little Endian Explicit VR Little Endian Explicit VR Big Endian	1.2.840.10008.1.2 1.2.840.10008.1.2.1 1.2.840.10008.1.2.2	FSR	Interchange
Nuclear Medicine Image (Retired)	1.2.840.10009.0.1.4.1.1.5	Implicit VR Little Endian Explicit VR Little Endian Explicit VR Big Endian	1.2.840.10008.1.2 1.2.840.10008.1.2.1 1.2.840.10008.1.2.2	FSR	Interchange
Ultrasound Multiframe Image (Retired)	1.2.840.10009.0.1.4.1.1.3	Implicit VR Little Endian Explicit VR Little Endian Explicit VR Big Endian	1.2.840.10008.1.2 1.2.840.10008.1.2.1 1.2.840.10008.1.2.2	FSR	Interchange
VL-Image (Retired)	1.2.840.10009.0.1.4.1.1.77.1	Implicit VR Little Endian Explicit VR Little Endian Explicit VR Big Endian	1.2.840.10008.1.2 1.2.840.10008.1.2.1 1.2.840.10008.1.2.2	FSR	Interchange



SpatialRegistration (Retired)	1.2.840.10009.0.1.4.1.1.66.1	Implicit VR Little Endian Explicit VR Little Endian Explicit VR Big Endian	1.2.840.10008.1.2 1.2.840.10008.1.2.1 1.2.840.10008.1.2.2	FSR	Interchange
Spatial Fiducials Storage	1.2.840.10009.0.1.4.1.1.66.2	Implicit VR Little Endian Explicit VR Little Endian Explicit VR Big Endian	1.2.840.10008.1.2 1.2.840.10008.1.2.1 1.2.840.10008.1.2.2	FSR	Interchange
Ultrasound Multiframe Image	1.2.840.10009.0.1.4.1.1.3.1	Implicit VR Little Endian Explicit VR Little Endian Explicit VR Big Endian	1.2.840.10008.1.2 1.2.840.10008.1.2.1 1.2.840.10008.1.2.2	FSR	Interchange
Video Endoscopic Image	1.2.840.10009.0.1.4.1.1.77.1.1.1	Implicit VR Little Endian Explicit VR Little Endian Explicit VR Big Endian	1.2.840.10008.1.2 1.2.840.10008.1.2.1 1.2.840.10008.1.2.2	FSR	Interchange
Video Microscopic Image	1.2.840.10009.0.1.4.1.1.77.1.2.1	Implicit VR Little Endian Explicit VR Little Endian Explicit VR Big Endian	1.2.840.10008.1.2 1.2.840.10008.1.2.1 1.2.840.10008.1.2.2	FSR	Interchange
Video Photographic Image	1.2.840.10009.0.1.4.1.1.77.1.4.1	Implicit VR Little Endian Explicit VR Little Endian Explicit VR Big Endian	1.2.840.10008.1.2 1.2.840.10008.1.2.1 1.2.840.10008.1.2.2	FSR	Interchange
VL Endoscopic Image	1.2.840.10009.0.1.4.1.1.77.1.1	Implicit VR Little Endian Explicit VR Little Endian Explicit VR Big Endian	1.2.840.10008.1.2 1.2.840.10008.1.2.1 1.2.840.10008.1.2.2	FSR	Interchange
VL Microscopic Image	1.2.840.10009.0.1.4.1.1.77.1.2	Implicit VR Little Endian Explicit VR Little Endian Explicit VR Big Endian	1.2.840.10008.1.2 1.2.840.10008.1.2.1 1.2.840.10008.1.2.2	FSR	Interchange

VL Photographic Image	1.2.840.10009.0.1.4.1.1.77.1.4	Implicit VR Little Endian Explicit VR Little Endian Explicit VR Big Endian	1.2.840.10008.1.2 1.2.840.10008.1.2.1 1.2.840.10008.1.2.2	FSR	Interchange
VL Slide Coordinates Microscopic Image	1.2.840.10009.0.1.4.1.1.77.1.3	Implicit VR Little Endian Explicit VR Little Endian Explicit VR Big Endian	1.2.840.10008.1.2 1.2.840.10008.1.2.1 1.2.840.10008.1.2.2	FSR	Interchange
X-Ray Radiation Dose SR	1.2.840.10009.0.1.4.1.1.88.67	Implicit VR Little Endian Explicit VR Little Endian Explicit VR Big Endian	1.2.840.10008.1.2 1.2.840.10008.1.2.1 1.2.840.10008.1.2.2	FSR	Interchange
Encapsulated STL	1.2.840.10009.0.1.4.1.1.104.3	Implicit VR Little Endian Explicit VR Little Endian Explicit VR Big Endian	1.2.840.10008.1.2 1.2.840.10008.1.2.1 1.2.840.10008.1.2.2	FSR	Interchange

**Table 33: Media FSR: Media Storage Application Profile for the Read Directory activity.**

Activity: Read Media

#### Description and Sequencing of Activities

Having listed the contents of the storage media using the Display Directory activity, the user may read one or more of the stored DICOM Instance using the appropriate Vitrea Read CAM. Note that the stored DICOM Instances are not imported to the local database. If the user wishes to import the store DICOM Instances this may be done using the Transfer Instances activity of the Storage SCU Application Entity, see section 3.1.5.

#### Media Storage Application Profile

The Media Storage Application Profile for the Read Media activity supports the Abstract Syntaxes and Transfer Syntaxes listed in Table 34.

Abstract Syntax		Transfer Syntax		Role	Ext. Neg
Name	UID	Name List	UID List		
Computed Radiography Image Storage	1.2.840.10009.0.1.4.1.1.1	Implicit VR Little Endian Explicit VR Little Endian Explicit VR Big Endian	1.2.840.10008.1.2 1.2.840.10008.1.2.1 1.2.840.10008.1.2.2	FSR	Interchange

CT Image Storage	1.2.840.10009.0.1.4.1.1.2	Implicit VR Little Endian Explicit VR Little Endian Explicit VR Big Endian	1.2.840.10008.1.2 1.2.840.10008.1.2.1 1.2.840.10008.1.2.2	FSR	Interchange
Digital Mammography X-Ray Image Storage – For Presentation	1.2.840.10009.0.1.4.1.1.1.2	Implicit VR Little Endian Explicit VR Little Endian Explicit VR Big Endian	1.2.840.10008.1.2 1.2.840.10008.1.2.1 1.2.840.10008.1.2.2	FSR	Interchange
Digital Mammography X-Ray Image Storage – For Processing	1.2.840.10009.0.1.4.1.1.1.2.1	Implicit VR Little Endian Explicit VR Little Endian Explicit VR Big Endian	1.2.840.10008.1.2 1.2.840.10008.1.2.1 1.2.840.10008.1.2.2	FSR	Interchange
Breast Tomosynthesis Image Storage	1.2.840.10009.0.1.4.1.1.13.1.3	Implicit VR Little Endian Explicit VR Little Endian Explicit VR Big Endian	1.2.840.10008.1.2 1.2.840.10008.1.2.1 1.2.840.10008.1.2.2	FSR	Interchange
Digital X-Ray Image Storage – For Presentation	1.2.840.10009.0.1.4.1.1.1.1	Implicit VR Little Endian Explicit VR Little Endian Explicit VR Big Endian	1.2.840.10008.1.2 1.2.840.10008.1.2.1 1.2.840.10008.1.2.2	FSR	Interchange
Digital X-Ray Image Storage – For Processing	1.2.840.10009.0.1.4.1.1.1.1.1	Implicit VR Little Endian Explicit VR Little Endian Explicit VR Big Endian	1.2.840.10008.1.2 1.2.840.10008.1.2.1 1.2.840.10008.1.2.2	FSR	Interchange
MR Image Storage	1.2.840.10009.0.1.4.1.1.4	Implicit VR Little Endian Explicit VR Little Endian Explicit VR Big Endian	1.2.840.10008.1.2 1.2.840.10008.1.2.1 1.2.840.10008.1.2.2	FSR	Interchange
Secondary Capture Image Storage	1.2.840.10009.0.1.4.1.1.7	Implicit VR Little Endian Explicit VR Little Endian Explicit VR Big Endian	1.2.840.10008.1.2 1.2.840.10008.1.2.1 1.2.840.10008.1.2.2	FSR	Interchange

Ultrasound Image Storage	1.2.840.10009.0.1.4.1.1.6.1	Implicit VR Little Endian Explicit VR Little Endian Explicit VR Big Endian	1.2.840.10008.1.2 1.2.840.10008.1.2.1 1.2.840.10008.1.2.2	FSR	Interchange
Ultrasound Image Storage (Retired)	1.2.840.10009.0.1.4.1.1.6	Implicit VR Little Endian Explicit VR Little Endian Explicit VR Big Endian	1.2.840.10008.1.2 1.2.840.10008.1.2.1 1.2.840.10008.1.2.2	FSR	Interchange
X-Ray Angiographic Image Storage	1.2.840.10009.0.1.4.1.1.12.1	Implicit VR Little Endian Explicit VR Little Endian Explicit VR Big Endian	1.2.840.10008.1.2 1.2.840.10008.1.2.1 1.2.840.10008.1.2.2	FSR	Interchange
X-Ray Radioflourosopic Image Storage	1.2.840.10009.0.1.4.1.1.12.2	Implicit VR Little Endian Explicit VR Little Endian Explicit VR Big Endian	1.2.840.10008.1.2 1.2.840.10008.1.2.1 1.2.840.10008.1.2.2	FSR	Interchange
Basic Text SR	1.2.840.10009.0.1.4.1.1.88.11	Implicit VR Little Endian Explicit VR Little Endian Explicit VR Big Endian	1.2.840.10008.1.2 1.2.840.10008.1.2.1 1.2.840.10008.1.2.2	FSR	Interchange
Blending Softcopy Presentation State	1.2.840.10009.0.1.4.1.1.11.4	Implicit VR Little Endian Explicit VR Little Endian Explicit VR Big Endian	1.2.840.10008.1.2 1.2.840.10008.1.2.1 1.2.840.10008.1.2.2	FSR	Interchange
Color Softcopy Presentation State	1.2.840.10009.0.1.4.1.1.11.2	Implicit VR Little Endian Explicit VR Little Endian Explicit VR Big Endian	1.2.840.10008.1.2 1.2.840.10008.1.2.1 1.2.840.10008.1.2.2	FSR	Interchange
Grayscale Softcopy Presentation State	1.2.840.10009.0.1.4.1.1.11.6	Implicit VR Little Endian Explicit VR Little Endian Explicit VR Big Endian	1.2.840.10008.1.2 1.2.840.10008.1.2.1 1.2.840.10008.1.2.2	FSR	Interchange

Comprehensive SR	1.2.840.10009.0.1.4.1.1.88.33	Implicit VR Little Endian Explicit VR Little Endian Explicit VR Big Endian	1.2.840.10008.1.2 1.2.840.10008.1.2.1 1.2.840.10008.1.2.2	FSR	Interchange
Digital Intra Oral X-Ray Image – For Presentation	1.2.840.10009.0.1.4.1.1.1.3	Implicit VR Little Endian Explicit VR Little Endian Explicit VR Big Endian	1.2.840.10008.1.2 1.2.840.10008.1.2.1 1.2.840.10008.1.2.2	FSR	Interchange
Encapsulated PDF	1.2.840.10009.0.1.4.1.1.104.1	Implicit VR Little Endian Explicit VR Little Endian Explicit VR Big Endian	1.2.840.10008.1.2 1.2.840.10008.1.2.1 1.2.840.10008.1.2.2	FSR	Interchange
Enhanced CT Image	1.2.840.10009.0.1.4.1.1.2.1	Implicit VR Little Endian Explicit VR Little Endian Explicit VR Big Endian	1.2.840.10008.1.2 1.2.840.10008.1.2.1 1.2.840.10008.1.2.2	FSR	Interchange
Enhanced MR Image	1.2.840.10009.0.1.4.1.1.4.1	Implicit VR Little Endian Explicit VR Little Endian Explicit VR Big Endian	1.2.840.10008.1.2 1.2.840.10008.1.2.1 1.2.840.10008.1.2.2	FSR	Interchange
Enhanced SR	1.2.840.10009.0.1.4.1.1.88.22	Implicit VR Little Endian Explicit VR Little Endian Explicit VR Big Endian	1.2.840.10008.1.2 1.2.840.10008.1.2.1 1.2.840.10008.1.2.2	FSR	Interchange
Enhanced XA Image	1.2.840.10009.0.1.4.1.1.12.1.1	Implicit VR Little Endian Explicit VR Little Endian Explicit VR Big Endian	1.2.840.10008.1.2 1.2.840.10008.1.2.1 1.2.840.10008.1.2.2	FSR	Interchange
Enhanced XRF Image	1.2.840.10009.0.1.4.1.1.12.2.1	Implicit VR Little Endian Explicit VR Little Endian Explicit VR Big Endian	1.2.840.10008.1.2 1.2.840.10008.1.2.1 1.2.840.10008.1.2.2	FSR	Interchange

Grayscale Softcopy Presentation State	1.2.840.10009.0.1.4.1.1.11.1	Implicit VR Little Endian Explicit VR Little Endian Explicit VR Big Endian	1.2.840.10008.1.2 1.2.840.10008.1.2.1 1.2.840.10008.1.2.2	FSR	Interchange
Key Object Selection Document	1.2.840.10009.0.1.4.1.1.89.09	Implicit VR Little Endian Explicit VR Little Endian Explicit VR Big Endian	1.2.840.10008.1.2 1.2.840.10008.1.2.1 1.2.840.10008.1.2.2	FSR	Interchange
Mammography CAD SR	1.2.840.10009.0.1.4.1.1.89.00	Implicit VR Little Endian Explicit VR Little Endian Explicit VR Big Endian	1.2.840.10008.1.2 1.2.840.10008.1.2.1 1.2.840.10008.1.2.2	FSR	Interchange
MI 3D Softcopy Presentation State	1.3.6.1.4.1.16978.3.1	Implicit VR Little Endian Explicit VR Little Endian Explicit VR Big Endian	1.2.840.10008.1.2 1.2.840.10008.1.2.1 1.2.840.10008.1.2.2	FSR	Interchange
Multiframe Grayscale Byte Secondary Capture Image	1.2.840.10009.0.1.4.1.1.7.2	Implicit VR Little Endian Explicit VR Little Endian Explicit VR Big Endian	1.2.840.10008.1.2 1.2.840.10008.1.2.1 1.2.840.10008.1.2.2	FSR	Interchange
Multiframe Grayscale Word Secondary Capture Image	1.2.840.10009.0.1.4.1.1.7.3	Implicit VR Little Endian Explicit VR Little Endian Explicit VR Big Endian	1.2.840.10008.1.2 1.2.840.10008.1.2.1 1.2.840.10008.1.2.2	FSR	Interchange
Multiframe True Color Secondary Capture Image	1.2.840.10009.0.1.4.1.1.7.4	Implicit VR Little Endian Explicit VR Little Endian Explicit VR Big Endian	1.2.840.10008.1.2 1.2.840.10008.1.2.1 1.2.840.10008.1.2.2	FSR	Interchange
Nuclear Medicine Image (Retired)	1.2.840.10009.0.1.4.1.1.5	Implicit VR Little Endian Explicit VR Little Endian Explicit VR Big Endian	1.2.840.10008.1.2 1.2.840.10008.1.2.1 1.2.840.10008.1.2.2	FSR	Interchange

Ophthalmic Photography 16-Bit Image	1.2.840.10009.0.1.4.1.1.77.1.5.2	Implicit VR Little Endian Explicit VR Little Endian Explicit VR Big Endian	1.2.840.10008.1.2 1.2.840.10008.1.2.1 1.2.840.10008.1.2.2	FSR	Interchange
Ophthalmic Photography 8-Bit Image	1.2.840.10009.0.1.4.1.1.77.1.5.1	Implicit VR Little Endian Explicit VR Little Endian Explicit VR Big Endian	1.2.840.10008.1.2 1.2.840.10008.1.2.1 1.2.840.10008.1.2.2	FSR	Interchange
Positron Emission Tomography Image	1.2.840.10009.0.1.4.1.1.128	Implicit VR Little Endian Explicit VR Little Endian Explicit VR Big Endian	1.2.840.10008.1.2 1.2.840.10008.1.2.1 1.2.840.10008.1.2.2	FSR	Interchange
Pseudo Color Softcopy Presentation State	1.2.840.10009.0.1.4.1.1.11.3	Implicit VR Little Endian Explicit VR Little Endian Explicit VR Big Endian	1.2.840.10008.1.2 1.2.840.10008.1.2.1 1.2.840.10008.1.2.2	FSR	Interchange
Nuclear Medicine Image (Retired)	1.2.840.10009.0.1.4.1.1.5	Implicit VR Little Endian Explicit VR Little Endian Explicit VR Big Endian	1.2.840.10008.1.2 1.2.840.10008.1.2.1 1.2.840.10008.1.2.2	FSR	Interchange
Ultrasound Multiframe Image (Retired)	1.2.840.10009.0.1.4.1.1.3	Implicit VR Little Endian Explicit VR Little Endian Explicit VR Big Endian	1.2.840.10008.1.2 1.2.840.10008.1.2.1 1.2.840.10008.1.2.2	FSR	Interchange
VL-Image (Retired)	1.2.840.10009.0.1.4.1.1.77.1	Implicit VR Little Endian Explicit VR Little Endian Explicit VR Big Endian	1.2.840.10008.1.2 1.2.840.10008.1.2.1 1.2.840.10008.1.2.2	FSR	Interchange
SpatialRegistration (Retired)	1.2.840.10009.0.1.4.1.1.66.1"	Implicit VR Little Endian Explicit VR Little Endian Explicit VR Big Endian	1.2.840.10008.1.2 1.2.840.10008.1.2.1 1.2.840.10008.1.2.2	FSR	Interchange

Ultrasound Multiframe Image	1.2.840.10009.0.1.4.1.1.3.1	Implicit VR Little Endian Explicit VR Little Endian Explicit VR Big Endian	1.2.840.10008.1.2 1.2.840.10008.1.2.1 1.2.840.10008.1.2.2	FSR	Interchange
Video Endoscopic Image	1.2.840.10009.0.1.4.1.1.77.1.1.1	Implicit VR Little Endian Explicit VR Little Endian Explicit VR Big Endian	1.2.840.10008.1.2 1.2.840.10008.1.2.1 1.2.840.10008.1.2.2	FSR	Interchange
Video Microscopic Image	1.2.840.10009.0.1.4.1.1.77.1.2.1"	Implicit VR Little Endian Explicit VR Little Endian Explicit VR Big Endian	1.2.840.10008.1.2 1.2.840.10008.1.2.1 1.2.840.10008.1.2.2	FSR	Interchange
Video Photographic Image	1.2.840.10009.0.1.4.1.1.77.1.4.1	Implicit VR Little Endian Explicit VR Little Endian Explicit VR Big Endian	1.2.840.10008.1.2 1.2.840.10008.1.2.1 1.2.840.10008.1.2.2	FSR	Interchange
VL Endoscopic Image	1.2.840.10009.0.1.4.1.1.77.1.1	Implicit VR Little Endian Explicit VR Little Endian Explicit VR Big Endian	1.2.840.10008.1.2 1.2.840.10008.1.2.1 1.2.840.10008.1.2.2	FSR	Interchange
VL Microscopic Image	1.2.840.10009.0.1.4.1.1.77.1.2	Implicit VR Little Endian Explicit VR Little Endian Explicit VR Big Endian	1.2.840.10008.1.2 1.2.840.10008.1.2.1 1.2.840.10008.1.2.2	FSR	Interchange
VL Photographic Image	1.2.840.10009.0.1.4.1.1.77.1.4	Implicit VR Little Endian Explicit VR Little Endian Explicit VR Big Endian	1.2.840.10008.1.2 1.2.840.10008.1.2.1 1.2.840.10008.1.2.2	FSR	Interchange
VL Slide Coordinates Microscopic Image	1.2.840.10009.0.1.4.1.1.77.1.3	Implicit VR Little Endian Explicit VR Little Endian Explicit VR Big Endian	1.2.840.10008.1.2 1.2.840.10008.1.2.1 1.2.840.10008.1.2.2	FSR	Interchange



X-Ray Radiation Dose SR	1.2.840.10009.0.1.4.1.1.88.67	Implicit VR Little Endian Explicit VR Little Endian Explicit VR Big Endian	1.2.840.10008.1.2 1.2.840.10008.1.2.1 1.2.840.10008.1.2.2	FSR	Interchange
X-Ray Radiofluoroscopic Image	1.2.840.10009.0.1.4.1.1.12.2"	Implicit VR Little Endian Explicit VR Little Endian Explicit VR Big Endian	1.2.840.10008.1.2 1.2.840.10008.1.2.1 1.2.840.10008.1.2.2	FSR	Interchange
Encapsulated STL	1.2.840.10009.0.1.4.1.1.104.3	Implicit VR Little Endian Explicit VR Little Endian Explicit VR Big Endian	1.2.840.10008.1.2 1.2.840.10008.1.2.1 1.2.840.10008.1.2.2	FSR	Interchange

**Table 34: Media FSR: Media Storage Application Profile for the Read Media activity.**

## 5.2.2 AE Specification: Media FSC

The related application profiles, real world activities, and roles for the Media FSC Application Entity are listed in Table 35.

Supported Application Profile	Real World Activity	Roles	SC Option
General Purpose CD-R Interchange	Write Media	FSC	Interchange
General Purpose Interchange on DVD-RAM Media	Write Media	FSC	Interchange

**Table 35: Media FSC: Related Application Profiles, Real World Activities, and Roles.**

### File Meta Information: Media FSC

Although the Media FSC creates DICOM File Meta Information for each file that it stores, it does not store information, which is specific to the Media FSC Application Entity. In particular, the Media FSC does not set the Source Application Entity Title.

### Real-World Activities

Activity: Write Media

#### Description and Sequencing of Activity

The local user at the Image Display inserts a CD-R/RW, a DVD-R/RW, a DVD+R/RW, or a DVD-RAM media into the media device, selects a number of DICOM Instances in the Workflow Manager, and invokes "Export". The Media FSC Application Entity will then create the file set corresponding to the selected DICOM Instances.

Note that it is possible to export to a non-local media device.

#### Media Storage Application Profile

The Media Storage Application Profile for the Write Media activity supports the Abstract Syntaxes and Transfer Syntaxes listed in Table 34.

### 5.3 Augmented and Private Application Profiles

The Vitrea Read Image Display does not support any Augmented or Private Application Profiles.

### 5.4 Media Configuration

The Vitrea Read Image Display does not depend on media configuration at installation time.

## 6 Support of Character Sets

### 6.1 Overview

Vitre Read Image Display supports the default character repertoire. Support extends to correctly decoding and displaying the correct symbol for all names and strings received over the network, found in the DICOMDIR, or found in the local database.

No specific support for sorting of strings other than in the default character set is provided by the Vitrea Read Image Display.

### 6.2 Character Sets

Vitre Read supports the extended character sets listed in Table 37.

Character Set Description	Defined Term
Latin 1	ISO_IR 100
ASCII	ISO_IR 6
Latin 2	ISO_IR 101
Latin 3	ISO_IR 109
Latin 4	ISO_IR 110
Cyrillic	ISO_IR 144
Arabic	ISO_IR 127
Greek	ISO_IR 126
Hebrew	ISO_IR 138
Latin 5	ISO_IR 148
UTF-8	ISO_IR 192

**Table 37: Supported specific character set defined terms.**

### 6.3 Character Set Configuration

Whether or not characters are displayed correctly depends on the presence of font support in the underlying operating system.

It may be necessary for the user to add one of the "all Unicode" fonts to their system configuration in order to correctly display characters that would not typically be used in the default locale. Note, that the font installation should happen at the server side, if Vitrea Read Image Display is used in a telemedicine configuration.

---

## 7 Security

### 7.1 Security Profiles

The Vitrea Read Image Display does not support any DICOM security profiles.

### 7.2 Association Level Security

Neither the Query/Retrieve SCU, Storage SCU, nor the Print Management SCU Application Entities accepts Association Requests.

The Storage SCP accepts all association requests, i.e. it is not possible to restrict associations based on Calling AET. The Storage SCP only verifies that it has been called with the correct AET.

### 7.3 Application Level Security

The Vitrea Read Image Display applications can be configured to use either MIT Kerberos or the internal database for user authentication. It is not possible to configure the Vitrea Read Image Display not to require user authentication. By default, the internal database is used.

When using MIT Kerberos for user authentication, it is possible to integrate the Vitrea Read Image Display with Microsoft Active Directory. This allows Microsoft Windows users to use their regular username and password to access the Vitrea Read Image Display.

## 8 Annexes

### 8.1 IOD Contents

#### 8.1.1 Created SOP Instance(s)

The Vitrea Read Image Display creates Key Objects and Grayscale Softcopy Presentation States. Attributes of Key Objects created by Vitrea Read Image Display can be seen in Table 38. Attributes of the Grayscale Softcopy Presentation State can be seen in Table 39.

The follow tables use a number of abbreviations. The abbreviations used in the "Presence of ..." column are:

VNAP Value not always present

ANAP Attribute not always present

ALWAYS Always present

EMPTY Attribute sent without value

The abbreviations used in the "Source" column are:

IMAGE Attribute value source is referenced image

USER Attribute value source is user input

AUTO Attribute value is auto generated

CONFIG Attribute value source is a configuration parameter

#### Key Object Selection Document IOD

IE	Module	Reference	Presence of Module
Patient	Patient	Table 40	ALWAYS
Study	General Study	Table 41	ALWAYS
	Patient Study		EMPTY
Series	Key Object Document Series	Table 44	ALWAYS
Equipment	General Equipment	Table 43	ALWAYS
Document	Key Object Document	Table 45	ALWAYS
	SR Document Content	Table 46	ALWAYS
	SOP Common	Table 47	ALWAYS

**Table 38: IOD of Created Key Object Selection Document SOP Instances.**

Attributes of Key Objects created by Vitrea Read Image Display can be seen in section 8.1.1.3 and section 8.1.1.4.

### Grayscale Softcopy Presentation State IOD

IE	Module	Reference	Presence of Module
Patient	Patient	Table 40	ALWAYS
Study	General Study	Table 41	ALWAYS
	Presentation Series		EMPTY
Series	Key Object Document Series	Table 48	ALWAYS
Equipment	General Equipment	Table 43	ALWAYS
Presentation State	Presentation State Identification	Table 49	ALWAYS
	Presentation State Relationship	Table 50	ALWAYS
	Display Shutter		EMPTY
	Displayed Area	Table 51	ALWAYS
	Graphic Annotation	Table 52	USER
	Spatial Transformation	Table 53	ALWAYS
	Graphic Layer	Table 54	USER
	Modality LUT	Table 55	ANAP – If source image contains Modality transformation, this module is created.
	Softcopy VOI LUT	Table 56	ALWAYS
	Softcopy Presentation LUT	Table 57	ALWAYS
SOP Common	Table 58	ALWAYS	

**Table 39: IOD of Created Grayscale Softcopy Presentation State SOP Instances.**

Attributes of Grayscale Softcopy Presentation States created by Vitrea Read Image Display can be seen in section 8.1.1.3 and section 8.1.1.5.

## Common Modules

Attribute Name	Tag	VR	Value	Presence of Value	Source
Patient's Name	(0010, 0010)	PN	From referenced image.	ALWAYS	IMAGE
Patient ID	(0010, 0020)	LO	From referenced image.	ALWAYS	IMAGE
Issuer of Patient ID	(0010, 0021)	LO	From referenced image.	ALWAYS	IMAGE
Patient's Birth Date	(0010, 0030)	DA	From referenced image.	ALWAYS	IMAGE
Patient's Sex	(0010, 0040)	CS	From referenced image.	ALWAYS	IMAGE
Patient's Birth Time	(0010, 0032)	TM	From referenced image.	ALWAYS	IMAGE
Other Patient IDs	(0010, 1000)	LO	From referenced image.	ALWAYS	IMAGE
Other Patient Names	(0010, 1001)	PN	From referenced image.	ALWAYS	IMAGE
Ethnic Group	(0010, 2160)	SH	From referenced image.	ALWAYS	IMAGE
Patient Comments	(0010, 4000)	LT	From referenced image.	ALWAYS	IMAGE

**Table 40: Patient Module of Created SOP Instances.**

Attribute Name	Tag	VR	Value	Presence of Value	Source
Study Instance UID	(0020, 000D)	UI	From referenced image.	ALWAYS	IMAGE
Study Date	(0008, 0020)	DA	From referenced image.	ALWAYS	IMAGE
Study Time	(0008, 0030)	TM	From referenced image.	ALWAYS	IMAGE
Referring Physician's Name	(0008, 0090)	PN	From referenced image.	ALWAYS	IMAGE
Study ID	(0020, 0010)	SH	From referenced image, or "NoValue" if no value specified by referenced image.	ALWAYS	IMAGE
Accession Number	(0008, 0050)	SH	From referenced image.	ALWAYS	IMAGE
Study Description	(0008, 1030)	LO	From referenced image.	ALWAYS	IMAGE

**Table 41: General Study Module of Created SOP Instances.**

Attribute Name	Tag	VR	Value	Presence of Value	Source
Modality	(0008, 0060)	CS	Auto-generated: "KO" or "PR".	ALWAYS	AUTO
Series Instance UID	(0020, 000E)	UI	Auto-generated.	ALWAYS	AUTO
Series Number	(0020, 0011)	IS	Auto-generated.	ALWAYS	AUTO
Series Date	(0008, 0021)	DA	Auto-generated: Current date.	ALWAYS	AUTO
Series Time	(0008, 0031)	TM	Auto-generated: Current time.	ALWAYS	AUTO
Series Description	(0008, 103E)	LO	From user input.	ALWAYS	USER

**Table 42: General Series Module of Created SOP Instances.**

Attribute Name	Tag	VR	Value	Presence of Value	Source
Manufacturer	(0008, 0070)	LO	From system configuration.	ALWAYS	CONFIG
Software Version	(0018, 1020)	LO	From system configuration.	ALWAYS	CONFIG

**Table 43: General Equipment Module of Created SOP Instances.**

### Key Object Selection Document Modules

Attribute Name	Tag	VR	Value	Presence of Value	Source
Modality	(0008, 0060)	CS	KO	ALWAYS	AUTO
Series Instance UID	(0020, 000E)	UI	Auto-generated.	ALWAYS	AUTO
Series Number	(0020, 0011)	IS	Auto-generated.	ALWAYS	AUTO

**Table 44: Key Object Document Series Module of Created KO SOP Instances.**

Attribute Name	Tag	VR	Value	Presence of Value	Source
Instance Number	(0020, 0013)	IS	Auto-generated.	ALWAYS	AUTO
Content Date	(0008, 0023)	DA	Auto-generated.	ALWAYS	AUTO
Content Time	(0008, 0033)	TM	Auto-generated.	ALWAYS	AUTO



Attribute Name	Tag	VR	Value	Presence of Value	Source
Current Requested Procedure Evidence Sequence	(0040, A375)		One or more items.	ALWAYS	AUTO
>Study Instance UID	(0020, 000D)	UI	From referenced image.	ALWAYS	AUTO
>Referenced Series Sequence	(0008, 1115)	SQ	One or more items.	ALWAYS	AUTO
>Series Instance UID	(0020, 000E)	UI	From referenced image.	ALWAYS	AUTO
>Referenced SOP Sequence	(0008, 1199)	SQ	One or more items.	ALWAYS	AUTO
>>Referenced SOP Class UID	(0008, 1150)	UI	From referenced image.	ALWAYS	AUTO
>>Referenced SOP Instance UID	(0008, 1155)	UID	From referenced image.	ALWAYS	AUTO

**Table 45: Key Object Document Module of Created KO SOP Instances.**

Attribute Name	Tag	VR	Value	Presence of Value	Source
Value Type	(0040, A040)	CS	"CONTAINER"	ALWAYS	AUTO
Concept Name Code Sequence	(0040, A043)	SQ	Sequence containing one item.	ALWAYS	AUTO
>Code Value	(0008, 0100)	SH	User input – but restricted to: 113000-113012, or 113026.	ALWAYS	USER
>Coding Scheme	(0008, 0102)	SH	"DCM"	ALWAYS	AUTO
>Code Meaning	(0008, 0104)	LO	User input – but restricted to: "Of Interest", "Rejected for Quality Reasons", "For Referring Provider", "For Surgery", "For Teaching", "For Conference", "For Therapy", "For Patient", "For Peer Review", "For Research", "Quality Issue", "Document Title Modifier", "Key Object Description", "Double exposure".	ALWAYS	USER
Text Value	(0040, A160)		User input.	ALWAYS	USER

**Table 46: SR Document Content Module of Created KO SOP Instances.**

Attribute Name	Tag	VR	Value	Presence of Value	Source
Specific Character Set	(0008, 0005)	CS	"ISO_IR 100"	ALWAYS	AUTO

Attribute Name	Tag	VR	Value	Presence of Value	Source
SOP Class UID	(0008, 0016)	UI	1.2.840.10009.0.1.4.1.1.89.09	ALWAYS	AUTO
SOP Instance UID	(0008, 0018)	UI	Auto-generated.	ALWAYS	AUTO

**Table 47: SOP Common of Created KO SOP Instances.**

Grayscale Softcopy Presentation State Modules

Attribute Name	Tag	VR	Value	Presence of Value	Source
Modality	(0008, 0060)	CS	PR	ALWAYS	AUTO

**Table 48: Presentation Series Module of Created GSPS SOP Instances.**

Attribute Name	Tag	VR	Value	Presence of Value	Source
Instance Number	(0020, 0013)	IS	Auto-generated.	ALWAYS	AUTO
Presentation Label	(0070, 0080)	CS	From user input.	ALWAYS	USER
Presentation Description	(0070, 0081)	LO	From user input.	ALWAYS	USER
Presentation Creation Date	(0070, 0082)	DA	Auto-generated: Current date.	ALWAYS	AUTO
Presentation Creation Time	(0070, 0083)	TM	Auto-generated: Current time.	ALWAYS	AUTO
Content Creator's Name	(0070, 0084)	PN	Auto-generated: User display name.	ALWAYS	AUTO

**Table 49: Presentation State Identification Module of Created GSPS SOP Instances.**

Attribute Name	Tag	VR	Value	Presence of Value	Source
Referenced Series Sequence	(0008, 1115)	SQ	One or more items.	ALWAYS	AUTO
>Series Instance UID	(0020, 000E)	UI	From referenced image.	ALWAYS	AUTO
>Referenced Image Sequence	(0008, 1140)	SQ	From referenced image.	ALWAYS	AUTO
>>Referenced SOP Class UID	(0008, 1150)	UI	From referenced image.	ALWAYS	AUTO
>>Referenced SOP Instance UID	(0008, 1155)	UI	From referenced image.	ALWAYS	AUTO
>>Referenced Frame Number	(0008,1160)	IS	If referenced image is a multi-frame image.	ANAP	AUTO

**Table 50: Presentation State Relationship Module of Created GSPS SOP Instances.**

Attribute Name	Tag	VR	Value	Presence of Value	Source
Displayed Area Selection Sequence	(0070, 005A)	SQ	One or more items.	ALWAYS	AUTO
>Referenced Image Sequence	(0008, 1140)	SQ	One or more items.	ALWAYS	AUTO
>>Referenced SOP Class UID	(0008, 1150)	UI	From referenced image.	ALWAYS	AUTO
>>Referenced SOP Instance UID	(0008, 1155)	UI	From referenced image.	ALWAYS	AUTO
>>Referenced Frame Number	(0008, 1160)	IS	If referenced image is a multi-frame image.	ANAP	AUTO
>Displayed Area Top Left Hand Corner	(0070, 0052)	SL	From current display settings.	ALWAYS	AUTO
>Displayed Area Bottom Right Hand Corner	(0070, 0053)	SL	From current display settings.	ALWAYS	AUTO
>Presentation Size Mode	(0070, 0100)	CS	From current display settings.	ALWAYS	AUTO
>Presentation Pixel Spacing	(0070, 0101)	DS	From current display settings.	ANAP	AUTO
>Presentation Pixel Aspect Ratio	(0070, 0102)	IS	From referenced image.	ANAP	IMAGE
>Presentation Pixel Magnification Ratio	(0070, 0103)	FL	From referenced image.	ANAP	IMAGE

**Table 51: Displayed Area Module of Created GSPS SOP Instances.**

Attribute Name	Tag	VR	Value	Presence of Value	Source
Graphic Annotation Sequence	(0070, 0001)	SQ	Zero or more items	ANAP	AUTO
>Referenced Image Sequence	(0008, 1140)	SQ	One or more items.	ALWAYS	AUTO
>>Referenced SOP Class UID	(0008, 1150)	UI	From referenced image.	ALWAYS	AUTO
>>Referenced SOP Instance UID	(0008, 1155)	UI	From referenced image.	ALWAYS	AUTO
>>Referenced Frame Number	(0008, 1160)	IS	If referenced image is a multi-frame image.	ANAP	AUTO

Attribute Name	Tag	VR	Value	Presence of Value	Source
>Graphic Layer	(0070, 0002)	CS	Layer in Graphic Layer Module.	ALWAYS	AUTO
>Text Object Sequence	(0070, 0008)	SQ	One or more items if text annotations are present.	ANAP	AUTO
>>Bounding Box Annotation Units	(0070, 0003)	CS	"PIXEL"	ALWAYS	AUTO
>>Anchor Point Annotation Units	(0070, 0004)	CS	"PIXEL"	ALWAYS	AUTO
>>Unformatted Text Value	(0070, 0006)	ST	From user input.	ALWAYS	USER
>>Bounding Box Top Left Hand Corner	(0070, 0010)	FL	From current display settings	ALWAYS	AUTO
>>Bounding Box Bottom Right Hand Corner	(0070, 0011)	FL	From current display settings	ALWAYS	AUTO
>>Bounding Box Text Horizontal Justification	(0070, 0012)	CS	From user input	ALWAYS	USER
>>Anchor Point	(0070, 0014)	FL	From user input.	ALWAYS	USER
>>Anchor Point Visibility	(0070, 0015)	CS	From user input.	ALWAYS	USER
>Graphic Object Sequence	(0070, 0009)	SQ	One or more items if graphic annotations are present.	ANAP	AUTO
>>Graphic Annotation Units	(0070, 0005)	CS	"PIXEL"	ALWAYS	AUTO
>>Graphic Dimensions	(0070, 0020)	US	2	ALWAYS	AUTO
>>Number of Graphic Points	(0070, 0021)	US	From user input.	ALWAYS	USER
>>Graphic Data	(0070, 0022)	FL	From user input.	ALWAYS	USER

Attribute Name	Tag	VR	Value	Presence of Value	Source
>>Graphic Type	(0070, 0023)	CS	One of: "POINT", "POLYLINE", "INTERPOLATED", "CIRCLE" or "ELLIPSE".	ALWAYS	USER
>>Graphic Filled	(0070, 0024)	CS	From user input.	ALWAYS	USER

**Table 52: Graphic Annotation Module of Created GSPS SOP Instances.**

Attribute Name	Tag	VR	Value	Presence of Value	Source
Image Rotation	(0070, 0042)	US	From current display settings.	ALWAYS	AUTO
Image Horizontal Flip	(0070, 0041)	CS	From current display settings.	ALWAYS	AUTO

**Table 53: Spatial Transformation Module of Created GSPS SOP Instances.**

Attribute Name	Tag	VR	Value	Presence of Value	Source
Graphic Layer Sequence	(0070, 0060)	SQ	One or more items	ALWAYS	AUTO
>Graphic Layer	(0070, 0002)	CS	LAYER1, LAYER2, ...	ALWAYS	AUTO
>Graphic Layer Order	(0070, 0062)	IS	From current display settings	ALWAYS	AUTO

**Table 54: Graphic Layer Module of Created GSPS SOP Instances.**

Attribute Name	Tag	VR	Value	Presence of Value	Source
Modality LUT Sequence	(0028, 3000)	SQ	Zero or one item. Either the Modality LUT Sequence is present with one item, or the Rescale Intercept/Slope/Type is present.	ANAP	AUTO
>LUT Descriptor	(0028, 3002)	US	From referenced image.	ALWAYS	AUTO
>Modality LUT Type	(0028, 3004)	LO	From referenced image.	ALWAYS	AUTO
>LUT Data	(0028, 3006)	US	LUT	ALWAYS	AUTO
Rescale Intercept	(0028, 1052)	DS	From referenced image. If referenced image does not contain rescale intercept, this value is set to 0.0.	ANAP	AUTO
Rescale Slope	(0028, 1053)	DS	From referenced image. If referenced image does not contain rescale slope, this value is set to 1.0.	ANAP	AUTO

Attribute Name	Tag	VR	Value	Presence of Value	Source
Rescale Type	(0028, 1054)	LO	"US"	ANAP	AUTO

**Table 55: Modality LUT Module of Created GSPS SOP Instances**

Attribute Name	Tag	VR	Value	Presence of Value	Source
Softcopy VOI LUT Sequence	(0028, 3110)	SQ	One or more items.	ALWAYS	AUTO
>Referenced Image Sequence	(0008, 1140)	SQ	One or more items.	ALWAYS	AUTO
>>Referenced SOP Class UID	(0008, 1150)	UI	From referenced image.	ALWAYS	AUTO
>>Referenced SOP Instance UID	(0008, 1155)	UI	From referenced image.	ALWAYS	AUTO
>>Referenced Frame Number	(0008, 1160)	IS	If referenced image is a multi-frame image.	ANAP	AUTO
>Window Center	(0028, 1050)	DS	From current display settings.	ALWAYS	AUTO
>Window Width	(0028, 1051)	DS	From current display settings.	ALWAYS	AUTO
>Window Center & Width Explanation	(0028, 1055)	LO	Name of Window Preset	ANAP	AUTO

**Table 56: Softcopy VOI LUT Module of Created GSPS SOP Instances**

Attribute Name	Tag	VR	Value	Presence of Value	Source
Presentation LUT Shape	(2050, 0020)	CS	Auto-generated: "IDENTITY" or "INVERSE".	ALWAYS	AUTO

**Table 57: Softcopy Presentation LUT Module of Created GSPS SOP Instances**

Attribute Name	Tag	VR	Value	Presence of Value	Source
Specific Character Set	(0008, 0005)	CS	"ISO_IR 100"	ALWAYS	AUTO
SOP Class UID	(0008, 0016)	UI	1.2.840.10009.0.1.4.1.1.11.1	ALWAYS	AUTO
SOP Instance UID	(0008, 0018)	UI	Auto-generated.	ALWAYS	AUTO

**Table 58: SOP Common Module of Created GSPS SOP Instances**

## 8.1.2 Usage of Attributes of Received IOD's

The local database and remote query make use of conventional identification attributes to distinguish patients, studies, series and instances. In particular, if two patients have the same value for Patient ID, the Vitrea Read Image Display will treat them as the same patient.

### Grayscale Softcopy Presentation State IOD

When a presentation state provides a Modality LUT Module, it is used. When a presentation state does not provide a Modality LUT Module, the information provided as part of the image is used instead.

## 8.1.3 Attribute Mapping

Not applicable.

## 8.1.4 Coerced/Modified Fields

The Vitrea Read Image Display does not perform any coercion.

## 8.2 Data Dictionary of Private Attributes

The Vitrea Read Image Display does not define any private attributes.

## 8.3 Coded Terminology and Templates

The value for Coded Meaning will be displayed for all coded values. The Vitrea Read Image Display does not provide a local lexicon to lookup alternative code meanings.

## 8.4 Grayscale Image Consistency

The image display monitor attached to Vitrea Read can – if supported by the monitor – be calibrated according to the DICOM Grayscale Standard Display Function (GSDf). The monitors Service/Installation Tool are used together with a luminance meter to measure the Characteristics Curve for the display system and the current ambient light. See the product Service Manual for details on the calibration procedure and supported calibration hardware. The result of the calibration procedure is a Monitor Correction LUT that will be active within the display system after a system reboot.

## 8.5 Standard Extended/Specialized/Private SOP Classes

### 8.5.1 MI 3D Softcopy Presentation State Private SOP Class

The General 3D CAM generates 3D Softcopy Presentation States in a private SOP Class  
 SOP Class (private): MI 3D Softcopy Presentation State  
 SOP Class UID: 1.3.6.1.4.1.16978.3.1

## 8.6 Private Transfer Syntaxes

The Vitrea Read Image Display does not support any private transfer syntaxes.